
Martin's Edition

A Newsletter for the Village of Martin's Additions to Chevy Chase



NOTES FROM THE COUNCIL CHAIRMAN

Dear Residents:

At this time of year many of us reflect on our blessings, and the Village of Martin's Additions is no exception. We are very fortunate to have a group of dedicated volunteers and contractors who play an important role in maintaining the wellbeing of the Village during the year. We recognize some directly through our Holiday Fund—our sanitation men and their important contribution to the health and safety of our Village. We also want to draw your attention to many others who make Martin's Additions a very special place to live—some are contractual employees, some are resident volunteers; all are willing to put in the extra effort needed to deliver exemplary service and make this a great place to live.

We are grateful to the many Village volunteers: the seven members of the **Land Use Task Force (LUTF)** who met for countless hours to devise building code recommendations soon to be presented to the Council; the three members of the **Elections and Ethics Committee** who actively recruit residents to run for Council and manage the elections; and **Dan Gardner**, our **Tree Supervisor**, who volunteers countless hours to make sure the Village trees stay pruned and healthy. He helps select and locate the new trees that we plant each year on the Village right-of-way—over the past 12 to 18 months, the Village has planted 28 new trees with the Dan's generous help. You will all have an opportunity to offer your personal thanks at our annual Winter Gathering at La Ferme on Sunday, February 8, 2009.

In addition to our wonderful village volunteers, we are also grateful to our contractors who contribute above and beyond their required work:

Paul Wolfe of **Integrated Plant Care, Inc.** cares for and plants our Village trees and right-of-way; he also spends untold and unpaid hours

(continued on next page)

DECEMBER 2008

♦WINTER GATHERING FEBRUARY 8th

Our Annual Winter Gathering at La Ferme Restaurant has been scheduled for *Sunday Afternoon, February 8, 2009*. Mark your calendar!



♦COUNTY POLICE TO GIVE NEIGHBORHOOD WATCH PRESENTATION

All interested residents are invited to attend *Thursday, January 15th at 7:00 PM* in the Village Office prior to the usual monthly Council meeting. Officer Matthis of the MC Police will make the presentation.


♦LEAVE A LIGHT ON

A street safety tip that we can all participate in! Leave your front porch or door lights on please!

♦VMA WEBSITE UP AND RUNNING

The Village website, www.martinsadditions.org is now formally up and running. See more details on the back page.

♦LET IT SNOW?

While we're not upbeat enough about winter weather to sing this song, we are prepared. See the article on page 4 for important information. 

♦SIDEWALKS MUST BE SHOVELED

Sidewalks must kept free of snow and ice for the safety of pedestrians. It's the law. See page 5.

♦DOG DON'T'S

PLEASE dispose of your dog's waste on your property. **DO NOT** drop the bag in the right of way or in the sand cans or in someone else's leaf bags.

♦NEXT BULK TRASH PICK UP

Saturday, January 10, 2009. Questions on this service can be directed to the Village Office

VILLAGE MEETINGS

Village Council Meeting: January 15th at 7:00 PM Village Office. Please note time change to accommodate presentation on Neighborhood Watch Program.

overseeing the wellbeing of our tree canopy, responding to numerous calls for help, and traveling the streets to be sure everything is in order. He is always ready to respond in an emergency and has come out late at night to remove trees fallen across the street, stop traffic until PEPCO can secure the power lines, clear paths and open the streets to assure the safety of our residents.

Mark Peyton and his crew keep our Village streets clean of leaves, snow and ice. While street cleaning can be done on a routine basis, snow plowing and de-icing require 24 hour on-call service to make sure the streets are passable, plowed and sanded. He has also made many hours available to the Village consulting on the best way to deliver services at the lowest price, upcoming storms, recommending a plan of attack and advising where problem areas exist, all for the purpose of assuring that our Village is safe.

Dan Shaw from **Chamberlain Contractors, Inc.**, has contributed many unpaid hours to the Village assessing street, curb and sidewalk conditions that the town should take under consideration for repair. Yes, we have hired his company for some Village projects, but his willingness to offer his professional advice pro bono is greatly appreciated and has saved the Village significant sums and enhanced services over the years.

Verges Construction and their “Go-To-Guy” **Shioyi Koga** serve as the “Public Works Department” of Martin’s Additions, ready to respond at a moment’s notice to any repair, install, move, remove, store, patch, un-store need the Village Office might have--you name it and they are there on a moment’s notice, going well above and beyond the call of any contract.

If we could add up all the “just a quick question” calls to **Alan Beal**, the **Village Building Administrator**, that he never bills for, we’d probably have another person to call on. Likewise, the contractor who is probably most invisible to residents is the man who keeps the **Village books**—**Dan Baden**—and returns our calls day, night and Sunday (literally!) and is always there when we have a question.

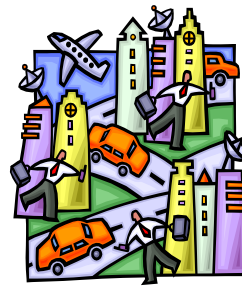
And kudos to **Jean Sperling**, **Village Manager**, who keeps it all happening. She, too, is a paid employee, but she (and her family) contribute many hours to make this such a wonderful place to live. The Village Manager has occasionally been

observed hanging out of the Village office window issuing directives to many of these contractors.

So, when you see Dan (either of them) walking the neighborhood, Mark Peyton and his crew cleaning the streets of leaves or spreading sand, Jean leaning out of the Village Office window, members of the LUTF or other resident volunteers, take a minute to thank them for the many uncompensated hours they work to make it better for all of us.

Best wishes for a wonderful holiday and a great New Year. There will be further opportunities to honor our volunteers at the annual Winter Gathering at La Ferme on Sunday afternoon, February 8th, 2009. Be sure to mark your calendar now!

Richard Krajeck



LAND USE TASK FORCE UPDATE

In late November the Village’s Land Use Task Force met to review the transcript of the October 23rd public meeting (That transcript is available to any interested residents—call

the Village Office to arrange to read it or for an electronic version; there is a charge to copy it). The Task Force also reviewed all written comments submitted before and after the meeting as planned. Of the nine speakers at the meeting, five were generally in favor of the LUTF’s proposals, one was opposed and three raised specific questions. Of the approximately forty written comments (after eliminating duplicates), twelve expressed general support, and four were opposed.

Specific comments were made regarding seven provisions in the Draft Proposed Ordinance Provisions (DPOP). The provisions commented on were the changes to the major components of the proposed ordinance: Building Height, Wall Plane Height, Wall Plane Length (side), Building Coverage, Driveway Width, Side Setbacks, and Corner Lot Restrictions.

At the November meeting, the Task Force reviewed each of those provisions and decided to change one provision of the DPOP: the Front Yard Non-Vegetative Surface Limits. While there was no

comment addressed to this specific provision, the Task Force reconsidered it in light of the observation at the public meeting, and that several alternatives had been considered previously. The Task Force decided to simplify the provision and apply a 30% limitation to front yard non-vegetative surface for all lots.

The LUTF decided to seek guidance from Jakubiak and Associates, the Village's LUTF planning consultants, on the question of whether the provisions for corner lots might be too restrictive. Two comments questioned whether corner lots were treated too harshly by requiring two front yards, and one rear yard, and whether some relief should be afforded because of the driveway and garage restrictions applied to two sides of the property. The Task Force considered that relief could be obtained through the variance process, e.g., Alan Beal pointed out that the new home on the corner of Turner Lane and Brookville Road has a wide driveway and two garage doors on the Turner Lane side, which would likely be allowed by variance under the DPOP because there is no on-street parking abutting the property. The Task Force decided not to change the provision unless, upon consultation with Jakubiak, there were good public planning reasons to consider a change and a good solution to any problems highlighted by the comments.

The Task Force members voted unanimously to forward to the Council the draft proposed ordinances as last amended, subject to consideration of any Jakubiak input, and to prepare a report to accompany the recommendation. The Task Force is in the process of preparing the report and hopes to finalize its recommendation prior to the January 2009 Village Council meeting.



Subsequent to this decision, the County Council on December 9, 2008, adopted Ordinance No. 16-31, Zoning Text Amendment No. 08-11, which reduced the maximum building coverage for certain lots in certain one-family residential zones, changed the definition of established building line for determining front setbacks, and required regulations to implement provisions for sloping lots. The Task Force is evaluating whether this legislation will require changes to the proposed

ordinances for Martin's Additions. It appears that building coverage provisions of the draft proposed ordinances may have to be altered slightly to assure that they are not more permissive than the new County ordinance.

STAY ON TOP OF THE LAND USE INFORMATION!
ACCESS THE TASK FORCE WEBSITE

Documents related to the work of the Land Use Task Force are accessible to every resident for their review and consideration on the Jakubiak Website.

1. Go to www.jakubiak.net
2. Click on the link that says "Village of Martin's Additions"
3. At the log-in page, enter the case sensitive log-in (VMA) and password (village)
4. Click on "Documents" on the right.

If you register your email address, you will receive an email when a new document is uploaded to the site. You may register your email address by emailing a request to bn@jakubiak.net.

VILLAGE LAND SURVEY COMPLETED

Have you ever wondered "Where does my property end and the public right-of-way begin?" Well, now we have the answer. The Village of Martin's Additions has just recently received the completed survey of the public property lines, and reciprocally, the front lot private property lines completed by the engineering firm of A. Morton Thomas and Associates, Inc. This engineering survey resulted in the establishment and marking of street right-of-ways throughout the Village. This in turn identifies where the Village public property ends and private property begins. The survey included the location of street curbs, sidewalks, front building/porch corners and lines showing the right-of-way. It also includes location of trees within the right-of-way—which trees belong to the town and which trees belong to private property owners.



Aluminum discs, stamped with "Village of Martin's Additions" and numbered were placed on top of the iron pins throughout the Village, some 60

in all, at right-of-way line intersections. You may have seen some of them. They are particularly visible along the Brookville Road sidewalk. A Geographic Information System database was also developed from the data collected in the survey and will be kept updated when changes are made in the town.



This information helps us clarify where private property ends and the public right-of-way begins. It is a common misconception that the dividing line between the two is in some way associated with the sidewalk, and if there is no sidewalk then there must not be any public right of way. The fact of the matter is that there is no predictable relationship and for those times when the sidewalk and the private property line do windup close together, it is by chance or history rather than protocol.

The basic components of the Village land include private property—the land you purchased as you home in Martins Additions, and the public-right-of-way—the area where the streets, green strips and sidewalks (for those streets that have them) are located. We all know intuitively that every house has private property that lies between the house and the street; the question is how far does it extend and where does it stop? With 315 residential properties in the Village there is no blanket rule to answer that question, but there are ways to get answers. This Village survey helps identify this right-of-way, which can vary from street to street because of the location of the house on the lot. Other aspects may vary as well. Some streets within the Village are wide with the houses set further back from the paved roadway while other streets are narrow with

the house much closer to the roadway. Additionally the roadway may not always be in the very middle of the overall right of way.



Having this information and monumentation completed for the Village will make it easier for

surveys of private property to be conducted now that survey points, reference markers and boundaries have been documented and integrated.

LET IT SNOW, LET IT SNOW...

While forecasting techniques and snow battling methods have improved, Mother Nature apparently doesn't read plans that well and often fails to follow the script. The DC area often gets several storms at once, with snow here, ice there and rain over yonder. We feel fully prepared for what may come our way this winter, but we're still keeping our fingers crossed. Here's some important information:

What does the Village do to be prepared? The Village does everything it can to be prepared to deal with snow and ice that inevitably will stalk us the winter.

- We clean **all the leaves up off the street** before we've seen any flakes so that we're not pushing leaves with the snow.
- The Village **Sand Cans are supplied** with a sand and salt mix and a shovel to be used to help rescue stranded motorists, get you out of your driveway, improve traction on that nasty hill in front of your home. Please be a good neighbor and make sure the lids are tightly on the can so the mixture does not get wet and call the Village Office if the bucket needs to be replenished.
- The plow blades are on the trucks. The tanks are full.
- The sand and salt loading arrangements have been made. We should be "good to go," as they say.



What can you expect?

- The **plowing will begin** as soon as there is enough snow on the pavement to push (**generally at least two inches**). If the snow is coming down in torrents the plowing will start about 2-3" accumulation and continue as additional inches of snow fall. The strategy is left to the experience and knowledge of our very able contractor, Mark Peyton.
- **We do not pre-treat our streets with salt.** We may immediately treat the fallen snow with salt and/or sand before there is enough

snow to plow. Usually two to three inches are required before we actually begin to plow to improve the traction and reduce sliding.

What can you do to make plowing most effective and life a bit easier?



- **Park your car in your driveway !!** It makes it so much easier, more effective and safer to plow the streets if cars are in the driveway! We can do a much better job clearing your street of snow without maneuvering around parked vehicles. This practice also provides more parking spaces for residents without driveways. Unfortunately, there's little our plow operators can do to keep snow away from your driveway entrance or parked cars.
- **PLEASE keep intersections clear of parked cars if you must park on the street!** The snow plows are BIG and are slowed down (sometimes prevented completely) by cars parked up close to intersections, especially at Summit Avenue and Thornapple Street.
- **Make sure your car is ready** to take on the snowy roads. Check that your battery is charged, you have good wiper blades, good treads on your tires, antifreeze, and at least half a tank of gas.
- **Clear the snow or ice** off the vehicle, including the roof before driving.



Don't forget your sidewalk!

- Your sidewalks need to be shoveled (it's the law in Montgomery County and in Martin's Additions).

Please make arrangements in advance. Remember that if it snows while you are gone, your sidewalk still must be cleared, so be sure to make arrangements in advance. Village of Martin's Additions' ordinances require that public sidewalks be shoveled within 12 hours of a snowfall.

**REPORT FROM THE
COUNTY SENIOR FIRE
SAFETY TASK FORCE**



Despite the fact that Montgomery County has one of the lowest fire death rates per capita in the country, senior citizens die in fires in disproportionate numbers, and the County is taking more aggressive action to change this trend. Seniors comprise only about 11 percent of the County's population, yet during the past 10 years, 24 seniors, age 65 and over, died in fires in Montgomery County – 43 percent of the 58 fire fatalities. Between 2004 and 2006, 12 seniors died in fires – 75 percent of the 16 fatalities that occurred.

The Senior Citizen Fire Safety Task Force has outlined a blueprint for action to stop the alarming upward trend of senior fire-related deaths and injuries, producing guidelines to improve safety and save the lives of our seniors. **Montgomery County Fire and Rescue Service's (MCFRS) "Safety in the Neighborhood" Campaign** is one of the ways firefighters are implementing the Task Force's recommendations.

Under this effort, all five MCFRS battalions have begun a **door-to-door campaign** to **install smoke alarms** in homes that do not have them; ensure installed **smoke detectors are working**; distribute **fresh batteries** for smoke detectors, if necessary; and leave door hangers encouraging residents to check their homes for fire safety. Martin's Additions seniors will be receiving this service.

The "Put a Finger On It" education effort to encourage residents to check their smoke alarms will also improve the community's overall level of preparedness.

Fire fighters will distribute fire prevention and other safety information at community activities and public events. MCFRS will also conduct surveys to measure the level of the community's preparedness and gauge the public's opinion of their performance. The full report is available on the County's website at www.montgomerycountymd.gov/firerescue. For more information, contact Pete Piringer, 240-777-2474.



MANY NEW TREES TAKE UP RESIDENCE IN VMA

The Village has recently completed the planting of 17 trees in the public right-of-way in several locations throughout the village. Our Tree Care Supervisor Dan

Gardner (Delfield Street) was instrumental in making the arrangements with Paul Wolfe of Integrated Plant Care to locate and plant the trees. The goal of this round of planting was to introduce new varieties of street trees to help diversify our tree stock. It will be exciting to discover what an Ivory Silk Japanese Tree Lilac looks like, as well as a Katsura, an Amur Maple, Black Gum and Gingko (don't worry—not the smelly one) and many more, when spring rolls around.

TREE PRUNING, REMOVAL AND CARE UNDERWAY THIS WINTER

As a part of our tree care program, fall tree fertilizing was provided to 135 trees in the Village that are under 6" in diameter. Tree pruning and lifting of branches has already begun and will continue throughout Martin's Additions during the winter months. At least one tree is slated for removal (a Black Walnut at 3515 Raymond Street).

PLEASE THINK BEFORE YOU PARK.

Residents are kindly reminded to be observant and thoughtful when they park on Village streets. Parking is so often at a premium that we need to work together to get the best results! Please:

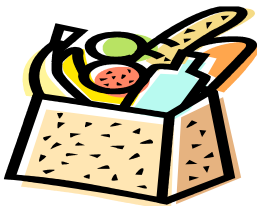
- ◆ Make sure not to block neighboring driveways.
- ◆ Refrain from parking opposite neighbors' driveways if at all possible.
- ◆ Make the best use of on-street parking. Did you use two spaces when all you needed was one?
- ◆ Observe No Parking signage in the Village. It is there to improve YOUR safety and has been installed with an official Traffic Order, so it can be enforced.
- ◆ Especially observe the 30 ft. No Parking zone that is required at a Stop Sign.

SHARE WHAT YOU NO LONGER NEED

Don't throw it away! *A Wider Circle* charity, which is located in Bethesda, would be delighted to have your household goods. This wonderful nonprofit charity, which comes to pick up items, serves needy people who have very little. Call 301-657-1010 to donate; visit www.awidercircle.org to learn more.

MANNA SHATTERS A RECORD

MARTIN'S ADDITIONS TRIES TO SET ONE!



In November, Manna provided food to a staggering **173 clients per day** on average—that's **5,190 meals a month and an increase of 56% in just a year's time**. Luckily, thanks to the outstanding generosity of Montgomery County individuals, faith-based organizations, corporations, and community groups, Manna currently has enough food to meet this unprecedented demand. Manna serves more than **3,100 families** each month at thirteen food distribution sites located throughout the county. Smart Sacks are provided to 600 elementary school children every Friday so they have food on the weekends when there are no school meals to nourish them. Manna distributes to emergency shelters, group homes, food pantries, and soup kitchens at no charge so they can help address the root causes of hunger. More information on Manna can be found at info@mannafood.org or by calling 301-424-1130.

The Village of Martin's Additions has been actively supporting Manna Food Center through the hard work and commitment of residents Linda and Dick Kirschten of Turner Lane. Manna's monthly newsletter includes a special thanks to the Village of Martin's Additions as a group and to Brookville Market who also participates in this wonderful program. **We have set a year-end goal of 1,000 lbs** of canned and dried food. As of December 11 the scales stood at 876 lbs, **so we need another 124 lbs** of donated food before the end of the year. A food collection box is always available just inside the Village Office exterior door—you don't even need to climb the stairs! Hunger knows no season.



THRU-TRUCKS RESTRICTED ON BROOKVILLE ROAD

Residents of Martin’s Additions, especially those who live on or near Brookville Road, may recall the baffling procession of enormous dump trucks down Brookville Road for several days on their way to DC last spring.

It wasn’t clear who selected one of the narrowest state highways in the County as a major route for all these heavy trucks full of dirt, but protests were made to the State Highway Department. It came as a surprise to Martin’s Additions and neighboring Section 3 officials that Brookville Road did not have restricted truck access, unlike Connecticut Avenue, which is restricted to trucks under five tons—hence the parade of trucks.

Fortunately, the State Highway Administration agreed with us local folks that if Connecticut Avenue is restricted to truck traffic, the same rules should certainly apply to Brookville Road. After a bit of wrangling with the State of Maryland the signs restricting trucks south were installed on East-West Highway. Local delivery vehicles are not affected by this restriction.

Alas, Maryland SHA has not yet been able to reach an agreement with the District of Columbia Department of Transportation about installing Truck Restriction signs on Western Avenue so there will be no pre-turn warnings onto Brookville Road—at least not right now. Signs will be placed on Brookville Road immediately north of Western Avenue warning that through truck traffic is restricted to 5 tons. These signs will probably not be installed until early 2009. Montgomery County Police and Chevy Chase Village Police will be ticketing through-trucks.

SOME MORE IMPORTANT NOTES: THANKS TO ALL FOR THE TOYS FOR TOTS

Many thanks to the Martin’s Additions residents who contributed to the Toys for Tots program in conjunction with the Chevy Chase Fire Department. Clearly many folks found the Village Office a convenient drop spot for the toys. Thanks to resident and Fire Board member Iris Reichert for spearheading this effort.



RECYCLING BINS AVAILABLE

The Village has just received delivery of new recycling bins. If you are in need of one please call the office and a bin can be claimed! The Village cannot currently deliver recycling bins.

WHERE’D YA LEAVE YOUR DOGGIE’S BAG?

Folks, PLEASE do not leave your used dog waste bags in other residents’ leaf bags along your route or on top of our SAND CANS. Not only does no one else want to pick up your dog’s debris, there is no one charged with that responsibility. Pick up after yourself and your dog.

SPEAKING OF PICKING UP.

The Village does not have staff to pick up un-collected copies of the *Gazette* or the *Examiner* or other reading materials that seem to make their way into the gutters and driveways of the Village. Leaving the papers there to decompose is probably not the best choice for the appearance of the streets, the safety of the residents or for the condition of the storm drains. Can you pick up your own and help out your neighbors too? The Village is working on trying to find an effective way to cancel this paper.

LEAVE A LIGHT ON

A street safety tip that we can all participate in—leave your front porch or front door lights on please! It will help illuminate the sidewalks and street. The cheapest form of nighttime crime deterrence is a well-lit home exterior. Keep lights on all night with timers (exterior and interior lights).

TAKE YOUR CAR KEYS TO BED

Hear a noise out front late at night? Scare off any would-be car vandals or break-ins by hitting your car alarm from the comfort of your bedroom window!

LOCK YOUR CAR.

Lock your car. Even in your driveway. Even parked in the street in front of your house. Even though you don’t think you have to. A serious rash of thefts from vehicles continues in our area. One recently arrested thief boasted to a Chevy Chase police officer, “You think this is going to stop because you arrested me? The word is out, Montgomery County is the place to go...” **Police non-emergency number to report a crime that has occurred: 301-279-8000. To report a crime in progress or an emergency call: 911.**

OUT AND ABOUT THE VILLAGE

WELCOME TO...

◆ *Vinay Bhargava & Anjali*

Kataria, recently moved into the neighborhood at **115 Quincy St.**

They relocated from the Bay Area, CA, and are getting settled in the house with their four year old daughter, Pallavi.

◆ *Keiko Inoue* and *William Urda* who are moving from DC into **6702 Melville Place** with their 2 ½ year old son Nicolai.



GOODBYE TO...

◆ *Frank and Bridgette Sterret* who are leaving **6702 Melville Place** where they have lived for almost 25 years. They are making a “life change” as Frank describes it to a condo at 4101 Cathedral Avenue. Frank will continue to work as a Human Resource Consultant and teach English as a second language for the World Bank. Bridgette has retired from her nursing career for now.

CONGRATULATIONS TO...

◆ *Peter Mueller* of **3509 Shepherd Street**, a student at BCC, and son of Chris and Lexy Mueller, who took 1st place in the Final Frontiers Engineering Competition at Wootton High School in the bridge-building contest. Although this was the first time BCC entered this competition they walked off with 2 out of 7 possible first place awards.

◆ *Jennifer Gibson and Chris Agharabi* (and their daughter Ava), at **7213 Summit Avenue**, recently opened up *Ava's Pizzeria & Wine Bar* in *St. Michaels, Maryland*. Reports are that business is already booming. Chris is a trained chef and has a great entrepreneurial spirit the place must be terrific. The restaurant is located at: 409 S. Talbot St., St. Michaels, MD. Tel: 410-745-3081. More information is available at <http://www.avaspizzeria.com>

◆ *Seth Shaffer*, of 3406 Shepherd Street, son of Mark and Susan Shaffer, on his international initiative to help children with mental and physical disabilities. In 2006, as a twenty-three year old college graduate, Seth volunteered to work with disabled children in Dharamsala, India. Based on that experience he decided to devote his life to improve the lives of these children, their families, and their communities. He created *Harmony Through Education* (HTE) to fund

and operate schools for children in rural, impoverished communities.

Seth raised enough money to open the first school in Dharamsala in July 2008. Already there is a waiting list and he hopes to expand the school to serve them and to open other schools wherever there is a need. *Harmony's* mission is to teach the children job skills that will allow them to work with their families or in sheltered workshops. The Dharamsala School also provides nutrition information, life skills, and health care for the students, families and community members. Seth has just begun a new initiative for a public awareness campaign on the impact of jaundice, since several of his students have disabilities as a result of this condition going undiagnosed. This experience has changed Seth's life as well as that of his family. Seth is in his second year of a Psychology Ph.D. program, specializing in developmental psychology, and will be able to bring these skills to *Harmony*. Find out more about this wonderful initiative by going to Seth's website www.HarmonyThroughEducation.org.

◆ *Help keep us informed* of new residents and interesting doings in Martin's Additions! Call or email the Village Office.

ENERGY ASSISTANCE AVAILABLE

There are a number of energy assistance programs available in the area for qualified families, including the federally-funded Maryland Energy Assistance Program (MEAP) which is administered by local government agencies. Contact the Maryland Department of Human Resources at 1-800-352-1446 for more information or the Office of Home Energy Programs at 410-767-7218. You can also find out information on several other programs available to assist persons with their heating bills at the above number.

The Washington Area Fuel Fund (WAFF), founded by Washington Gas nearly 25 years ago helps families who do not qualify for, or who have exhausted, government energy assistance. Administered by The Salvation Army, WAFF provides funds for all types of fuel to heat families' homes in the winter. For more information on WAFF, please call 1-888-318-9233.

**INCOME TAX TIME... DON'T FORGET
WHERE YOU LIVE**

As a municipality in the State of Maryland, the major source of revenues for the Village of Martin's Additions is our share of income taxes which every resident pays to the state. In order for us to receive this revenue sharing, you must write "*Martin's Additions*" in the box marked "City, town or taxing area" on your Maryland Income Tax Form 502. This assures that a portion of your tax dollars comes back to the Village (as contained in State law),

FORM 502		MARYLAND RESIDENT INCOME TAX RETURN	
OR FISCAL YEAR BEGINNING		ENDING	
SOCIAL SECURITY #		SPOUSE'S SOCIAL SECURITY #	
Your First Name	Initial	Last Name	
Spouse's First Name	Initial	Last Name	
PRESENT ADDRESS (No. and street)			
City or Town		State	Zip Code
Name of county and incorporated city, town or special taxing area in which you were a resident on the last day of the taxable period. (See Instruction 6)		Maryland county	City, town or taxing area <i>Martin's Additions</i>

to provide you with services. This money helps support our municipal budget for trash collection, recycling, leaf collection, street cleaning, snow removal, tree care, and the many other municipal services that are administered by the Village of Martin's Additions. Don't give those revenues away!

You have much more control over how these tax dollars are spent right here in your Village and

for your direct benefit..

**"ALERT MONTGOMERY" FOR
EMERGENCY INFORMATION**

With the coming of winter and possible weather-related emergencies, our residents, workers and frequent visitors to Montgomery County are encouraged to sign up for direct and timely electronic alerts about severe weather, traffic problems and other emergencies that may affect your daily plans by going to Alert Montgomery at <https://alert.montgomerycountymd.gov>. You can designate for alerts to be sent to one or more of your electronic devices, including cell phones, text pagers, and wireless devices, along with home and work emails.

SOURCE FOR RESOURCES

The State of Maryland has a wonderful website that will direct you to solutions for just about any problem you can imagine. It is particularly oriented to families. Just go to www.problemsolver.maryland.gov and you'll be amazed at the links available. This information was provided to the Village by the Governor's Office of Community Initiatives.

YOU MAY BE INTERESTED IN...

The photography services of Martins Additions' resident **Valerie Brown** of Chestnut Street who specializes in photos of children, animals and families. She is offering special "Recession Pricing" right now. You can reach her at 301-656-4121 or at valeriebrownart@mac.com and see her work at www.valeriebrownphotos.com.

**FAMOUS BCC USED BOOK SALE
SCHEDULED FOR
MARCH 28 and 29, 2009**

Start putting your used books aside for the Spring 2009 Used Book Sale at BCC High School. Proceeds benefit the BCC High School PTSA. They will be looking for Fiction and Non-Fiction for all ages: Mystery, Art, Sci-Fi, History, Test Prep, Foreign Language, Science and more. No encyclopedias, outdated textbooks or magazines. Drop-off dates will be compressed into a week's time, from Friday, March 20, through Friday March 27, 2009.

**VILLAGE COUNCIL AND STAFF
2008**

- Council Chairman**
Richard Krajeck 301-654-3663
3500 Bradley Lane rkrajeck@hotmail.com
- Council Vice-Chair**
Noell Sottile 301-654-7898
3508 Cummings La. noniesings@hotmail.com
- Council Secretary**
Diane Everts 301-654-7777
3522 Raymond St. dianeadel@aol.com
- Council Treasurer**
Catherine Gwin 301-652-7425
7314 Delfield St. catherinegwin@gmail.com
- Deputy Vice-Chair**
Larry Wasson 301-652-5122
7223 Delfield St.
lwasson@affiliatedinspectors.com
- Village Office** 301-656-4112
Jean Sperling, Manager FAX 301-656-0030
martinsadditions@verizon.net



Village of Martin's Additions
7013 B Brookville Road
Chevy Chase, MD 20815

PRELIMINARY AGENDA

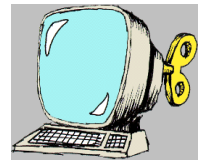
January 15, 2008
Council Meeting
Village Office



Call to Order 7:00 PM
Neighborhood Watch Presentation
CCV Police Report
Citizens Comments
FY 2008 Auditors Report
Minutes and Treasurer's Report
Elections and Ethics Committee Report
New Business

VMA WEBSITE UP AND RUNNING

We are happy to announce that the Village website, www.martinsadditions.org is now formally up and running! As our opening Home Page states, the site is still "under construction", meaning that we'd like to hear if you have some suggestions on how to improve or add to what's there.



Coming soon, residents will be able to register their email address through the Village website in order to receive special notices, emergency information and the like from the Village Office. As of March 2009 the minutes of the Village Council meeting will no longer be routinely included in the newsletter because the Minutes are now available on the website. Those who do not have computer access can receive the minutes by calling the Village Office.

Village of Martin's Additions
7013 B Brookville Road
Chevy Chase, MD 20815

◆ 301-656-4112 ◆ Fax 301-656-0030 ◆ email: martinsadditions@verizon.net ◆
www.martinsadditions.org