

Martin's Edition



A Newsletter for the Village of Martin's Additions to Chevy Chase



Notes from the Chairman...

Dear Residents:

The business of winter is upon us and begins with thoughts of snow shoveling. At the December 16th Council meeting, we will be voting on an amendment to our ordinances that increases the time residents have to clear their sidewalks after a snow storm and increases the fee for failure to do so. As has been noted in the Council Meeting Minutes from November, increasing the time to clear the sidewalks from 12 hours to 24 hours after the snow has ceased brings the Village in line with the County regulations. It also makes the imposition of fines more reasonable.

Clearing the sidewalks is important so that residents—particularly school children—are not forced to walk in the plowed streets. Walking in the streets is a safety issue for everyone, but particularly for our younger and older residents. Please be considerate and shovel the sidewalks. If you need help shoveling please see the information provided here in the newsletter on companies and Community Helpers available for hire.



I also want to remind residents that the Council made a budget decision earlier this year to change heavy trash pick-up to every other month and to stop weekly lawn waste pick-up after the second week of December. The Village Manager has been sending out notices to the residents about when there will be Christmas tree pick-up and when weekly lawn waste pick up starts again in the spring. We appreciate your cooperation.

Best wishes to everyone for a Happy Holiday Season and a Happy New Year.

Richard Krajeck

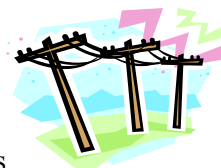
Have you tried www.chevychase.patch.com for real local news? It's great fun!

DECEMBER 2010

◆ PEPCO REPS COMING TO VMA COUNCIL MEETING

DECEMBER 16th, 7 PM!

Representatives from PEPCO's Reliability Office will make a presentation and answer questions at the December 16th Council meeting in the Village Office beginning at 7 PM.



◆ DON'T FORGET THE HOLIDAY FUND!

Your contributions to the holiday fund for our men at Waste Management are greatly appreciated. Please get contributions into the office by December 17th.

◆ YARD WASTE COLLECTIONS END DECEMBER 13TH!

See the information on page 3 about yard waste.

◆ CHRISTMAS TREE PICK-UP

Christmas trees should be put by the curb for pick up either Monday, January 3 or Monday, January 10, 2011.

◆ DON'T FORGET "TOYS FOR TOTS" DROPOFF IN VMA OFFICE

New, unwrapped toys can be brought to the office. Toys are particularly needed for the 11-15 year old age group.

◆ IMPORTANT TAX FILING INFO FOR RESIDENTS OF VMA

The Village receives a share of the income taxes you pay to Maryland. Write "Martin's Additions" in the box marked "City, town or taxing area" on Form 502.

◆ HELP THE FOOD DRIVE REACH 5,000 LBS!

We are getting close to this terrific benchmark. Make a last donation for the year and get us over the mark! Box is at the foot of the stairs to the Village Office.

◆ REMEMBER THE 4 P'S

Poop in the Proper Place Please.

That means no dog poop in recycling bins, yard bags or sand cans. Take it home with you.

VILLAGE COUNCIL MEETING

December 16th at 7:00 PM. Village Office. PEPCO Reps will be here to discuss their improvement plan.

See the Agenda on the back page.



VILLAGE ELECTION COMMITTEE SEEKS NEW MEMBER

The Martin's Additions Village Council is seeking nominations for the Village Election and Ethics Committee. Sharon Hadary Coyle, a member of the Committee since 2007 officially submitted her recognition as of November 30, 2010. Sharon has been a resident of Martin's Additions for 40 years and was the longest standing Chairman of the Village Council since our incorporation. Section 605 of the Village Charter requires that all elections are managed by an Election Committee which consists of a minimum of three people who have been "openly and fairly" solicited from a list of qualified voters and then appointed by the Council. Frank Correl of Turner Lane

is currently the Chairman of the Committee and Ted Stoddard, also of Turner Lane, is a committee member.

The Committee helps generate interest in the Annual Village Council Elections, identify candidates, assists with the preparation of Community Saturday Forums and conduct the election in May. Long standing procedures are in place for these activities and Committee members act primarily in an advisory capacity. Any questions on the committee's responsibility can be directed to Frank Correl at 301-951-6211. Interest in offering your name for nomination should be made in writing, either by email or letter, to the Village Office at 7013B Brookville Road, Chevy Chase, MD 20815 or to martinsadditions@verizon.com.

ACTION TO BE TAKEN ON ORDINANCE 10-01-1 ON AGENDA Thursday December 16th , 2010

SUBJECT: AN ORDINANCE TO AMEND CHAPTER 7 OF THE CODE OF ORDINANCES OF THE VILLAGE OF MARTIN'S ADDITIONS TO EXTEND THE TIME LIMIT FOR SNOW AND ICE REMOVAL AND TO INCREASE THE APPLICABLE FINE FOR UNREMOVED SNOW AND ICE.



BE IT ORDAINED AND ORDERED, this 16th day of December, 2010, by the Village Council, acting under and by virtue of the authority given it by Article 23A of the Maryland Code and the Charter of the Village of Martin's Additions, that Chapter 7 of the Code of Ordinances is hereby amended as follows:

CHAPTER 7 PROPERTY REGULATIONS

Section 7-204. Unremoved Snow and Ice

(a) The owner of a lot in the Village, or his designated agent or lessee, shall within [twelve (12)] **twenty-four (24)** hours after a snowfall ceases:

- 1) Remove, or cause the removal of, snow and ice from any sidewalk on such lot or on abutting public property that is normally used by the public.
- 2) Deposit or cause the deposit of, the removed snow or ice in a reasonably safe location and not upon any public roadway or sidewalk.

3) If said snow and ice cannot be removed because of hardening, make the sidewalk reasonably safe for pedestrian travel by spreading sand or a similar substance.

(b) In the event that the owner [or] **of** a lot in the Village or his designated agent or lessee fails to remove or cause the removal of snow and ice from a sidewalk or to render the sidewalk reasonably safe for pedestrian travel as required in this Section, [the Village may cause the removal or rendering and charge the owner, agent or lessee the cost of removal plus a penalty in the amount of twenty five dollars (\$25.00)] **the Village Manager, or his or her designee, may take such action as is necessary to return the sidewalk to a condition required by this Section. The cost of any corrective action may be specially assessed against the abutting private property and collected with the property taxes or collected by a suit for damages.**

(c) **Any person who violates any provision of this Section 7-204 or allows a violation of any provision of this Section on his or her property, shall be guilty of a municipal infraction and shall be jointly and severally subject to a penalty of One Hundred Dollars (\$100.00) for each day that a violation exists. If a violation occurs, there shall be a rebuttable presumption that all owners of the property allowed the violation.**

Bold Underline indicates new material
[Bold Brackets] indicates material deleted
*** indicates material unchanged

**PEPCO OFFICIALS TO MAKE
PRESENTATION TO
MARTIN'S ADDITIONS
DEC. 16 th at 7 PM**



Representatives from PEPCO will **make** a presentation to the residents of Martin's Additions on the components of the priority feeder line repair program currently underway that affects Martin's Additions. The meeting will begin at **7 PM, December 16th** in the Village

Office, just prior to the Monthly Council meeting. PEPCO will be sending representatives from their Operations Office, from their Customer Care and Reliability Office, and from their Government Affairs Office. Residents will have an opportunity to ask questions of these officials.

PEPCO officials will discuss the Feeder Line Progress Report that is scheduled to be released this month and they will also discuss the new "Smart Meters" program that is intended to make major improvements in the information available to PEPCO about where and when the outages occur. Plan to attend this important presentation.



**BULK & YARD TRASH PICK
UP DATES**

Bulk Trash Collection:

January 8, 2011, March 12, 2011,
May 14, 2011

Yard Waste Collection:

Last Pick Up of 2010: Monday, December 13th

"Supplementary" Yard waste Pick Up:

Monday January 10th

First Pick Up of 2011: Monday, March 14th

Christmas Tree Collection:

**Monday, January 3 and Monday January
10th (with Supplementary Yard Waste
pick up.)**



SHARE WHAT YOU NO LONGER NEED

A *Wider Circle* charity, which is located in Bethesda, would be delighted to pick up your unwanted household goods. Call 301-657-1010 to donate; visit www.awidercircle.org to learn more.

VMA FY 2010 AUDIT COMPLETED



This overview and analysis of the financial activities of the Village of Martin's Additions for the fiscal year ended June 30, 2010 is a summary of the Village's financial statements as they were presented in the audit performed by the audit and accounting firm of Linton Shafer Warfield & Garrett, P.A.

Overall, fiscal year 2010 provided many challenges to the Village. Income tax revenues ended the year \$156,028 under budget and \$384,995 less than fiscal year 2009. The total Village fund balance decreased \$254,695 for an ending fund balance of \$935,135. Interest rates and return on investments suffered during the year. The State Highway User revenues were cut by 90% in order to help balance the State's budget. While these revenue items impacted the Village's financial position during the year the Village still ended the fiscal year with healthy cash reserves. With the uncertain economic climate in the near future the Village Council took appropriate action in formulating the FY2011 budget to make sure that the Village maintains a healthy financial position into the future.

Financial Highlights

- The assets of the Village of Martin's Additions exceeded its liabilities at the close of the fiscal year by \$1,125,608 (net assets). Of this amount, \$936,441 (unrestricted net assets) may be used to meet the government's ongoing obligations to citizens and creditors.
- The government's total net assets decreased by \$260,211.
- As of the close of the fiscal year, the Village of Martin's Additions reserve funds had a combined ending fund balance of \$935,135, a decrease of \$254,695 in comparison with the prior year. Approximately 36% of this total amount, \$332,840, is available for spending at the government's discretion (unreserved fund balance). The balance of \$602,295 is reserved for street improvements and prepaid expenses.

Financial Analysis: Net Assets

Net assets may serve over time as one useful indicator of a government's financial position. In the case of the Village of Martin's Additions, assets
(continued on next page)

exceeded liabilities by \$1,125,608 at the close of the 2009-2010 fiscal year. Approximately 17% of the Village of Martin's Additions net assets reflect its investment in capital assets (e.g., land, buildings, machinery, and equipment). The Village of Martin's Additions uses these capital assets to provide services to citizens; consequently, these assets are not available for future spending. The unrestricted net assets of \$936,441 may be used to meet the government's ongoing obligations to citizens and creditors.

Governmental activities decreased the Village of Martin's Additions net assets by \$260,211. The biggest cause for this decrease in net assets was a decrease in income tax revenues by \$384,994 over the prior year amount. Tax receipts of \$326,023 which included property and income tax receipts, comprised 83% of the total revenues of \$395,379.

Financial Analysis: Revenues

During the fiscal year, the revenues for the Village were impacted greatly. Three revenue accounts were severely under budget and under the prior year's level. These include income taxes, state highway user revenue and interest on investments.

State income taxes for the year totaled \$293,972. This amount was \$384,995 less than the prior year's level of \$678,967. As this income source is the largest revenue for the Village, it impacted the level of capital improvement projects that were planned for the year and forced the Village to revisit the budget throughout the year.

Also during the year the State cut **highway user funding** by 90%. This resulted in the Village only receiving \$3,851 from this revenue source. This was \$26,149 less than anticipated and \$28,937 less than the prior year amount. This cut is expected to continue into future fiscal years.

Interest rates were at an all time low during the year. This affected the amount of investment income that the Village received. With close to a \$1,000,000 average investable cash balance during the year the Village was only able to achieve interest income of \$2,294 for the year. This was \$12,706 less than planned and \$13,070 less than the prior year. Interest rates are

projected to remain low through the next fiscal year.

Financial Analysis: Expenses and Budget Amendments

During the year, the State of Maryland experienced two major snow storms. As a result of the storms the Village incurred \$84,078 in snow removal costs. The original snow removal budget was \$30,000. The Village was able to recover \$14,084 from the Federal Emergency Management Agency for cost related to these storms. The Village still had to cover close to \$40,000 of costs for this storm over the budgeted amount.

With the decrease in income tax revenues and cuts in state aid the Village was forced to tighten the budget during the year. Most of the expenditure accounts finished at or below the prior year figures. The Village still proceeded with needed street and sidewalk work in the amount of \$25,270 on Taylor Street, Turner Lane and Brookville Road. These repairs were far less than the originally planned. The Village also proceeded with the purchase of new recycling bins for the community at a cost of \$18,846.

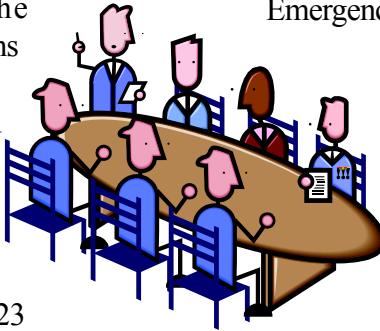
During the fiscal year the Village made amendments to the budget to account for necessary adjustments in revenues. The final budgeted expenditures increased \$34,700 over the original budget for expenditures. This increase is mainly associated with the adjustments made to allocate funds for snow removal costs due to the two major snow events.

Actual expenditures exceeded revenues by \$254,695 in the General Fund for fiscal year 2010. In fiscal year 2009 revenues exceeded expenditures by \$219,619.

Actual revenues and expenditures were very close to the final budget figures due to continual management of the budget and frequent adjustments to the budget during the year. The major difference in the public works department is the fact that \$241,730 additional was budgeted for street and sidewalk work but was not completed due to the decreases in revenue.

Financial Analysis: Capital Assets

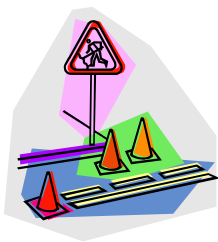
At the end of fiscal year 2010, the Village's governmental activities have invested \$10,229 in office equipment, \$1,381 in leasehold improvements and \$202,394 in infrastructure. Total depreciation for the 2010 fiscal year was \$6,695 and accumulated depreciation for all assets was \$24,837.



WSSC REPLACES SECTIONS OF SANITARY SEWER LINE

The Washington Suburban Sanitary Commission has identified two areas in Martin's Additions—a stretch of Delfield Street and of Raymond Street—that require replacement of the sanitary sewer line and the connections to homes. The main line is replaced before any work is done on the connections to residences and a temporary line is installed for those sections not completed so that residents do not experience service interruptions. Work has begun on Delfield Street and is expected to be completed in several weeks. Work on Raymond Street is not expected to begin until spring 2011.

Replacement of lateral lines to the residential connections at the edge of the right-of-way (about 14 feet from the curb) will include the construction of a “clean out” connection at the point where the private line meets the public system in the front of each home. This will allow future access to residential sewer lines from this opening in the right-of-way should there ever be a problem with the sanitary sewer line. WSSC has asked for everyone's patience as work progresses on this project.



CHEVY CHASE SECTION 5 WEIGHS TRAFFIC CALMING OPTIONS

At their October meeting, the Chevy Chase Section Five Council discussed the possibility of adding traffic calming devices to their streets. Traffic Engineering Consultant Joseph Cutro prepared a report about where Section Five could potentially add speed humps and “No Right Turn” signs to restrict traffic flow onto Section Five streets from northbound Connecticut Avenue.

Cutro's report pointed out two core groups where speed humps could be placed. Twelve speed humps could protect the four through-streets connecting Connecticut Ave. and Brookville Rd. along Thornapple St., Underwood St., Williams La. and Woodbine St. Speed humps could be placed in a similar manner to the three parallel roads in Chevy Chase Village Section 3 which already have speed humps.

The report points out that the median speed of the four streets is currently eighteen miles per hour and

that speed humps would not change the speed profile of the streets. However, the humps would reduce the speed of drivers traveling 35 miles per hour or faster, but currently that number is no greater than ten per day.

“I think ten drivers racing down our streets per day is way too much,” said Section 5 Council Treasurer Karin Flynn. The council planned to have Cutro do a presentation on the report at the November council meeting. Section Five planned to invite other Chevy Chase residents, including those living in unincorporated portions of Chevy Chase to ask for their input. *(Excerpted from an article on Patch.com by Natalie Neumann)*

The restriction of traffic onto Section Five's streets from Connecticut Avenue could have a significant impact on the residents of the surrounding areas.



Get in the Spirit: Only 250 lbs needed!

One week into December and the Village's food drive has collected and delivered 4,750 pounds of canned and boxed items to the Manna Food Center. That means we are closing in on our 2010 goal of 5,000 pounds!! All it will take to get over the top is for each Martin's Additions household to donate a one-pound can of food between now and the end of the year. The collection box is at the bottom of the stairs to the Village Office and, from now until Dec. 31st, there is an additional box at the Brookville Super Market. Or, as always, you can call Dick and Linda Kirschten at 301-986-5839 and they will swing by for a pick up. The need throughout the County remains great, with both unemployment and poverty rates on the rise. And of course, the food drive will continue into the New Year. Weather permitting, look for the Manna Table set up outside the Market on the Martin Luther King Day of National Service (Monday, Jan. 17th). You can also follow the lead of one of our Section 5 neighbors and organize your kids and their friends to go door-to-door for donations. Dick and Linda will transport all contributions out to Manna the following day. Thanks again to all of you for being so generous! Enjoy the holidays!

LOTS OF WAYS TO BE PREPARED FOR WINTER: TIPS FROM EVERYONE

FROM THE VILLAGE: LET IT SNOW, LET IT SNOW. ..SORT OF



While forecasting techniques and snow battling methods have improved, Mother Nature apparently hasn't read the memo and often fails to follow our script. We all remember last year's storms too well. We feel fully prepared for what may come our

way this winter, but we're still keeping our fingers crossed that it won't be a repeat of last year. Here is some important information:

What are residents responsible for when it snows?

- Sidewalks! Your sidewalk(s) **MUST** be shoveled within 24 hours of the end of the storm—it's the law in Montgomery County **and** in Martin's Additions. And, if you live on a corner lot, you must shovel both sidewalks.
- **Remember that if it snows while you are not home, your sidewalk still must be cleared, so be sure to make arrangements in advance.**
- **Park your car(s) in your driveway—the importance of this cannot be stressed enough!** It makes it so much easier, more effective and safer to plow the streets if cars are in the driveway! We can do a much better job clearing your street of snow without maneuvering around parked vehicles.
- ***Keep intersections clear of parked cars if you must park on the street:*** The snow plows are BIG and are slowed down (sometimes prevented completely) by cars parked up close to intersections, especially at Summit Avenue and Thornapple Street and Chestnut and Taylor.
- **Clear the snow or ice off your vehicle(s), including the roof—before driving off.**

What does the Village do to be prepared? The Village does everything it can to be prepared to deal with snow and ice that inevitably will stalk us the winter.

- We clean **all the leaves up off the street** before we've seen any flakes so that we're not pushing leaves with the snow.



- The Village **Sand Cans** are supplied with a sand and salt mix and a shovel to be used to help rescue stranded motorists, get you out of your driveway, improve traction on that nasty hill in front of your home. Please be a good neighbor and make sure the lids are on the can tightly so the mixture does not get wet and call the Village Office if the bucket needs to be replenished.

- The plow blades are on the trucks. The tanks are full.
- The sand and salt loading arrangements have been made. We should be "good to go," as they say.

What can you expect?

- The **plowing will begin** as soon as there is enough snow on the street to push (**generally at least two inches**). If the snow is coming down in torrents the plowing will start about 2-3" accumulation and continue as additional inches of snow fall. The strategy is left to the experience and knowledge of our very able contractor, Mark Peyton.
- **We generally do not pre-treat our streets with chemicals.** We may immediately treat the fallen snow with salt and/or sand before there is enough snow to plow. Usually two to three inches are required before we actually begin to plow to improve the traction and reduce sliding.



DON'T FORGET TO SHOVEL YOUR SIDEWALKS!

Village residents are responsible for clearing sidewalks in front of their property of snow and ice within twenty four hours after the snow storm ceases. Residents who occupy corner lots are responsible for sidewalks in front and on the side of their property. If you need help shoveling, the Village office has compiled a list of firms who, can provide you with **shoveling services** for a fee. In addition, a number of teenagers in Martin's Additions will also provide the service. Look on the enclosed pages for the names and contact information for the providers.

ENERGY SAVING TIPS FROM WASHINGTON GAS

As colder weather approaches, Washington Gas continues to encourage all customers to prepare their homes for the winter heating season by practicing energy efficiency, including the following low-cost or no-cost tips:



- Change or clean furnace/air filters once a month and schedule an annual furnace or boiler check-up with a licensed professional.
- Caulk and weather strip around doors and windows.
- Install rubber gaskets behind outlet and switch plates.
- Turn the water heater down to warm or low settings, never more than 120 degrees Fahrenheit.
- Wash full loads of laundry and dishes.
- Use cold water for laundry using specially formulated cold-water detergents.
- Consider installing new, high-efficiency appliances.
- Look for the ENERGY STAR energy-efficient product label.
- Consider purchasing a programmable thermostat, which automatically lowers the temperature setting and increases the setting during the day.

FROM "ALERT MONTGOMERY": SOURCE FOR EMERGENCY INFORMATION

With the coming of winter and possible weather-related emergencies, our residents, workers and frequent visitors to Montgomery County are encouraged to sign up for direct and timely electronic alerts about severe weather, traffic problems and other emergencies that may affect your daily plans. Go to <https://alert.montgomerycountymd.gov>. You can designate that alerts be sent to one or more of your electronic devices.

KNOW YOUR WINTER STORM TERMINOLOGY

- Freezing rain creates a coating of ice on roads and walkways.
- Sleet is rain that turns to ice pellets before reaching the ground. Sleet also causes roads to freeze and become slippery.
- Winter Weather Advisory means severe weather such as heavy snow or ice is possible in the next day or two.

THOUGHTS FROM WSSC

The Village received a letter from WSSC recently that provided some interesting information that will no doubt become even more pertinent as we move into cold weather and water mains begin to burst. They asked us to consider these facts:

- 45 percent of our water mains are over 50 years old.
- 29 percent of the mains are 25-50 years old.

By 2025 it is estimated that approximately 50 percent of our water mains will reach or exceed their useful life. Waste water mains still have a substantial life span, but many are in need of rehabilitation. In fact, Martin's Additions currently has a waste water main replacement project underway on Delfield Street and another one is scheduled for Raymond Street in the spring of 2011. WSSC's goal is to replace 36 miles of water main and to rehabilitate 51 miles of wastewater mains per year. At this rate it will take about 200 years to replace all of the water mains.

WSSC will send a senior management team to discuss the problems that they, and we, face with the aging infrastructure. Let the Village Office know if you are interested (301-656-4112) and we'll schedule a meeting.

FROM THE FIRE DEPARTMENT: IMPORTANT WINTER SAFETY TIPS



- Never use your oven or range top to heat your home. Using the oven to heat a room or apartment during winter is dangerous – for two reasons. First, leaving burner flames on and unwatched is a fire hazard. Second, oven burners operating continuously can use up indoor oxygen and lead to the production of deadly carbon monoxide.
- Carbon monoxide (CO) is a colorless, odorless and toxic gas. The [U.S. Consumer Product Safety Commission](#) recommends putting CO detecting alarms outside the bedrooms in each separate sleeping area of your home. Replace batteries at least twice each year and change the batteries in your smoke alarms too.

CHEVY CHASE LIBRARY BOOK CLUBS AND DISCUSSION GROUP

Non-Fiction Book Group meets at 2:30 pm in the meeting room

January 12: “Nickel and Dime: On (Not) Getting by in America” by Barbara Ehrenreich

February 9: “The Professor and the Madman,” by Simon Winchester

Fiction Book Group meets each month at 2:30 pm

December 15: “China Boy” by Gus Lee

January 26: “Olive Kitteridge” by Elizabeth Stout

February 23: “Snow in August” by Pete Hamill

⇒ *Please Note: Participants in the non-fiction and fiction book groups must obtain their own copies of the books. The library system has sufficient copies of each book* ⇐

Jefferson Café meets at 10:30 am. The articles will be available in advance at the library Information Desk.

December 17: “Why Not Nuclear Disarmament?” by Christopher A. Ford

January 21: “Why We Must Judge” by Roger Berkowitz

February 18: “Hate Crimes/Thought Crimes” by Jesse Lerner



VOLUNTEER ON MLK

DAY OF SERVICE! On Monday, January 17, Montgomery County will celebrate the Martin Luther King, Jr. Day of Service. The county’s main celebration will take place at the North Bethesda Marriott Hotel and Conference Center. The event will include service projects from 1 to 3pm and a volunteer fair from 1 to 3:30pm at the Conference Center followed by a tribute which will be held at Strathmore Hall at 4 pm. If you have any questions please contact Lucy Yost at Lucy.Yost@montgomerycountymd.gov or 240-777-2618

◆ ANOTHER REASON TO CHECK THE VISIBILITY OF YOUR HOUSE NUMBERS!

We’ve stressed before how important it is for emergency personnel to be able to find your house number. PEPCO has informed us that it is equally important for them to have visible house numbers so that they can easily identify addresses during outages. Check your house number!

OUT AND ABOUT THE VILLAGE



◆ **Tonya Stremlau & Derek Braun** have purchased the house at 3505 Taylor St. They have 4 year old boy/girl twins—Carter and Erica Braun, who will turn 5 in Feb. Derek and Tonya are both professors at Gallaudet University. Derek is in the Biology department and runs the Molecular Genetics Lab and Tonya teaches in the English department. They last lived in Bethesda. Derek is originally from Madison, WI, and Tonya is from New Orleans. Welcome to VMA!

◆ We also welcome **Peggy Brown** who just moved here from Hawaii. She and her two dogs are settling in to 7308 Summit Ave. **Sharon Hadary**, the former owner and long time VMA resident, has moved from VMA, but not too far—only to Bethesda.

◆ Former Martin’s Additions resident **Ralph Wisner** died at age 100 on November 22, 2010. He lived on Shepherd St. from 1950 to 2003 when he moved to Asbury Village. In 2000, his wife Kathleen planted Little T, a small Juniper Topiary, in the front yard as a gift to her husband on the occasion of his 90th birthday and in recognition of Ralph’s passion for growing junipers and boxwoods. At one time there were nearly 200 boxwoods and junipers planted on the property. Until shortly before he moved, Ralph personally maintained the grounds, including the pruning of hedges more than twice his height. He is predeceased by his wives Mae and Kathleen and by his son Phillip. He is survived by sons Ralph Jr. and Charles, and daughter Greta and by 13 grandchildren, 4 great-grandchildren and one great-great-grandson.

**BEFORE WE “SNOW IT”
we’ll be shoveling! Get
ready.**



The Village is assembling a list of snow shoveling services in order to help residents be prepared to clear their sidewalks and driveways this coming winter. You may recall that Martin’s Additions has suspended its snow shoveling program due to budgetary constraints. Residents are required by law to clear their sidewalks. Here are some names we have so far:

◆ **Mulheron Tree (and Snow Removal) Experts**, the Contractor who provided snow shoveling services for Martin’s Additions in the past, has agreed to write individual contracts for residents desiring snow shoveling/snow blowing services for sidewalk and driveway clearance for the coming winter. If you are interested in getting more information about these services please contact: Maria Jeffers at Mulheron Tree Experts, Inc., Phone: 301-942-6700, Fax: 301-942-6734 or by email at (Maria@mulherontreeexperts.com).

◆ **Meridian Landscaping, LLC** has been recommended as a reliable shoveling and plowing firm, using both snow blowers and hand shoveling. They service the Virginia, Washington and Maryland suburbs. You can reach **Matt Kucik of Meridian Landscaping, LLC** at 202-236-6018 or at Info@MeridianLandscapes.com

ALSO ON THE LIST:

- ◆ **Verges Services** of Kensington, 301-942-6666
- ◆ **Alfonso Prada Shoveling and Plowing** 240-286-8509
- ◆ **Pedro Lazo Services** 202-309-3138
- ◆ Our **Community Helpers List** on the next page provides names of neighborhood shovelers.



**WHO DO YOU USE TO
SHOVEL YOUR SNOW?**

If you can make a referral for a snow shoveling service you have used, please forward the information to the office. We will continue to update our Snow Services List in an effort to help residents be prepared.

VMA COMMUNITY HELPERS LIST SUBMISSION FORM

Add your name to our community helpers list! The list acts as a public service announcement for teens seeking jobs and Village residents seeking individuals to provide a variety of services. This is a free opportunity to advertise your services and to earn some money! Prices for these services are negotiated between the helper and the resident. See our current Community Helpers list on the next page. If you have any questions, call the Village Office at 301-656-4112. Forms can be Faxed to 301-656-0030. Snow shovelers are always in demand!

Name: _____

Address: _____

Phone: (home) _____ (Cell) _____

PLEASE CIRCLE THE SERVICES YOU WANT TO OFFER:

Snow Shoveling, Baby-Sitting, Pet Care, Yard Work, Tutoring, General Chores, Computer /Technology

Assistance. Other _____

Signature _____ Date _____

Parent’s Signature if you are under 18 years of age.

VILLAGE OF MARTIN'S ADDITIONS COMMUNITY HELPERS LIST

The Village does not screen to determine the experience and maturity of the teens on this list. Please do the screening you believe necessary to determine if the teen can fill your needs adequately and responsibly.

Name	Snow Shoveling	Yard Work	Baby-Sitting	Tutoring	General Chores	Errands	Pet Care	Computer/Tech Assist	Other
Benjamin Glassman Home: 301-654-8807 Cell: 301-706-1255 Cummings Lane	X	X	X	X			X		
Ryan McElroy Home: 301-657-4305 Cummings Lane	X	X		X	X	X	X	X	Convert Video To DVD
Liam McGowan Home: 301-654-1682 Cell: 404-610-3618 Brookville Road	X	X	X	X	X	X	X		
Kenneth Myerson Home: 301-657-2865 Summit Ave.	X	X			X			X	
Nikki Novak Home: 301-656-5949 Chestnut St.			X				X		
Thomas Otero Cell: 240-743-9765 Shepherd St.							X		
Bennett Parr Home: 301-718-2453 Quincy St.	X	X	X	X			X		
George Dobud Home: 301-654-4306 Cell: 301-741-5304 Turner La.	X		X						



Village of Martin's Additions
 7013 B Brookville Road
 Chevy Chase, MD 20815

VILLAGE COUNCIL AND STAFF

Arthur Alexander 301-718-9787
 3517 Raymond Street
arthur.alexander@att.net

Chris Mueller 301-718-9687
 3509 Shepherd Street
christophjmueller@yahoo.com

Jill Filipczyk 301-656-5566
 301-3510 Taylor Street
jill.filipczyk@gsa.gov

Richard Krajeck 301-654-3663
 3500 Bradley Lane
rkrajeck@hotmail.com

Michael Zielinski 301-654-1748
 3418 Turner Lane
mzatvma@gmail.com

Village Office 301-656-4112; FAX 301-656-0030

Jean Sperling, Manager

Deb Schmal, Assistant Manager
 email: martinsadditions@verizon.net
 Website: www.martinsadditions.org

**Council Meeting
 December 16th, 2010
 Preliminary Meeting Agenda**



- Presentation by PEPCO: Reliably Plan Improvements and Progress
- Call to Order: Chairman Krajeck
- Residents Comments, Concerns & Contributions
- Council Action, Ordinance No. 10-10-1: Section 7-204(a) and (b) of Village Code: Changes to Snow Shoveling Requirements.
- Building Administrator's Report: Beal
 - Construction Underway/ Other Issues
 - Report on other Jurisdiction's Construction Fees
 - Quincy/Oxford Water Project
- Action on November Minutes
- Financial Report for November & Action
 - Budget Amendment-Audit Costs-Other
- Manager's Report
- Residents Concluding Comments
- Adjournment

Village Council Meetings and Agenda Notice

Council meetings are held every **third Thursday of the month at 7:30 pm** in the Village Office located at 7013 B Brookville Road, unless otherwise posted. The Meeting Agenda is posted on the Village Bulletin Board outside the Brookville Supermarket prior to the meeting and on the Village website www.martinsadditions.org on the Friday before the meeting. A

preliminary agenda is published in this newsletter. Contact the Village Office if you wish to have an item considered for placement on the meeting agenda at least two weeks in advance of the meeting. A complete copy of meeting minutes are available in the Village Office, posted on the bulletin board and available on our website.