

# Martin's Edition



A Newsletter for the Village of Martin's Additions to Chevy Chase

## Notes from the Chairman...



As I write this, there is snow in the forecast for tonight. While we can hope we will not be hit with major snowstorms as we were a couple of years ago that closed our streets and played havoc with our Village budget, there are some things we can all do that will make it easier—and safer—for all of the Village residents:

- Please be sure to shovel your sidewalk. Forcing people, particularly our kids coming and going to school, into the streets because the sidewalks are not cleared is a serious safety hazard.

- Please help your neighbors. When there is cold weather or snowy streets, some of our older or disabled residents find it hard to get to the store. Just offering to go shopping or to take your neighbor shopping can be a great help. Again, for some people, snow covered or icy sidewalks pose a serious risk so any help you can give will be much appreciated.



- Park your car off the street. When there is heavy snow predicted, it helps the snow plow do a better job. Our narrow streets are a risk for the snow plow—they do not want to hit cars—so we can help by getting our cars off the street so they are able to plow and widen the streets as much as possible. FYI: at the December meeting the Council will consider designating one side of the street parking on streets that allow 2-sided parking in order to address the issue of getting streets safely plowed.

Just a reminder to send in your contribution for the workers who pick up our yard waste, garbage and recycling whether it's raining, snowing, hot or cold. They are loyal and committed and are most appreciative of our "Holiday Fund" support at this time of year.

Happy Holidays and best wishes for the New Year.

*Richard Krajeck*

## DECEMBER 2011



### ◆ YARD WASTE COLLECTIONS END DECEMBER 19th!

Collections will resume March 19th. See more information on page 3 about yard waste.

### ◆ DON'T FORGET THE HOLIDAY FUND!

Your contributions to the holiday fund for our men at Waste Management are greatly appreciated. Please get contributions into the office by December 19th.



### ◆ DON'T FORGET "TOYS FOR TOTS" DROPOFF IN VMA OFFICE

New, unwrapped toys can be brought to the office. Toys are particularly needed for the 11-15 year old age group.

### ◆ HELP THE FOOD DRIVE REACH 5,000 LBS AGAIN THIS YEAR!

Make a last donation for the year and get us over the mark! Box is at the foot of the stairs to the Village Office. See page 3 for more information.

### ◆ TREATS FOR OUR TROOPS STILL BEING COLLECTED IN VMA OFFICE

Thinking about our troops overseas this Holiday season? Item donations are still being collected.

### ◆ CHRISTMAS TREE PICK-UP

Christmas trees must be put by the curb for pick up either Monday, Jan. 2nd or Monday, January 9th, 2012. Christmas trees put out later than that will not be collected until March.



### ◆ VMA RESIDENTS NEED SNOW SHOVELERS!

Looking for work on snow days? There are lots of residents looking for snow shoveling help. Call the Village Office to get your name on the list that will be shared with residents looking for a strong back.

### ◆ IMPORTANT TAX FILING INFO FOR RESIDENTS OF VMA

The Village receives a share of the income taxes you pay to Maryland. Write "Martin's Additions" in the box marked "City, town or taxing area" on Form 502.

Next Council Meeting Scheduled for  
Monday, December 12th at 7:30 PM  
Agenda Available on Website and Bulletin Board

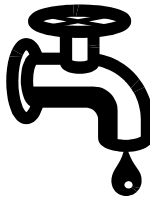


## COUNCIL RE-APPOINTS ELECTIONS COMMITTEE FOR 2012 ELECTION

Three residents have been re-appointed to serve on the Village Elections Committee for the 2012 Village Council Election. They are Frank Correl of Turner Lane, Ted Stoddard also of Turner Lane and Noell Sottile of Cummings Lane. They will begin gearing up soon for our May election, which will be for three seats on the Village Council.

### WORK ON OXFORD ST. WATER LINE CLOSE TO COMPLETION

The subcontractor J. Fletcher Cream and Son, has completed the installation of new water lines on Oxford Street and we now await the milling and repaving of the trench and full restoration to the right of way. Some of this work may need to be delayed until spring, but we are hoping to get a better patch at least on the street so that our snow plow doesn't lose a blade!



### ADDITIONAL STREETS IN VMA ADDED TO THE LIST FOR WATER LINE RESTORATION



WSSC has recently added Bradley, Raymond and Melville to their list of streets where water lines need to be replaced. The engineers at EBA are currently planning the work and hope that it can be added to the project slated to begin next spring which includes Cummings, Shepherd, Turner, Taylor, Delfield, Chestnut, Thornapple and Summit. This is known as the Chevy Chase Water Main Replacement/Relocation Phase 5 Project. Our water lines date back to the 1914-1920 period, as evidenced by frequent breaks. Fortunately WSSC has decided it's time to take a much bigger approach to the problem and attack our whole system. We do not anticipate that this process, which may take years, will be easy, but the Village will keep you informed of scheduled initiation dates and plans as best we can.

### OLD THOUGHTS FROM WSSC

Last year at this same time we reported the following information to you from WSSC that is worth repeating, because it substantiates the need for the water line

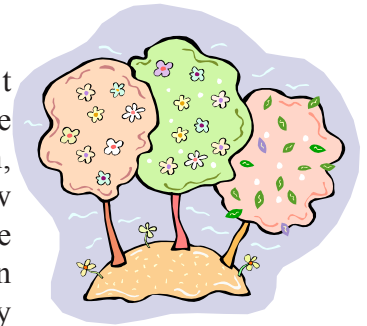
replacement that is currently under design. They asked us to consider these facts:

- many of our mains were installed in the 1920's.
- 45 percent of our water mains are over 50 years old.
- 29 percent of the mains are 25-50 years old.

By 2025 it is estimated that approximately 50 percent of our water mains in Montgomery County will reach or exceed their useful life. Waste water mains still have a substantial life span, but many are in need of rehabilitation also. WSSC's goal is to replace 36 miles of water main and to rehabilitate 51 miles of wastewater mains per year. At this rate it will take about 200 years to replace all of the water mains. We should consider ourselves fortunate that Martin's Additions is receiving so much attention!

### VILLAGE COMPLETES MAJOR TREE PLANTING PROGRAM

The Village has just completed a major tree replacement program, having planted 27 new trees, with a 28th tree scheduled for planting in the spring when the nearby construction is completed. The new trees are concentrated in the north end of Martin's Additions in an effort to begin re-growing the trees we lost from storms and PEPCO's repairs to our power lines. The list includes Autumnalis Cherry, Ginkgo, Sweetgum, Amur Maple, Hornbeam, Pin Oaks, Kousa Dogwoods, Red Maple, and Sugar Maples. Trees were not exclusively planted in the north end however; Shepherd Street is proudly sporting four new trees, including a Red bud and Pin Oak, Cummings has claimed a Ginkgo, Raymond a new Amur Maple, Bradley two red oaks and a Tree Lilac, and Quincy is showing off a new Willow oak and another Amur maple for the community. Whew! It was a big job! The fruit of the labor will begin to bloom in the spring!



### 110 VILLAGE TREES TO GET A GOOD MEAL, BUT NO MORE WATER



One of the tasks of the Village tree care program is to encourage growth through routine feeding of our trees, especially those that are less than 6" in diameter--the baseline size

for feeding. Our past feeding programs have clearly been paying off. In 2008, 135 trees were fed and, since then, the Village has witnessed wonderful growth in many of our newer trees. Now is the time (fall) to feed the next round of trees that were planted in the period between 2008 and the present that remain under 6 “ in diameter. These trees will be given a time-release food that will continue to nourish them for some time. The Village is down to about only 110 trees that are less than 6” in diameter--many are newer additions to our tree inventory over the recent years. New Village trees that were just planted are not included in this feeding project- they won’t be fed for another year.

Trees that have been planted within the last 2-3 years have had tree watering bags, which is our standard practice to encourage early tree growth--they are receiving their last watering and any remaining tree bags will be removed for the winter. Larger, older Village trees will be considered for time-release feeding in the spring of 2012.

**WINTER WILL BE VILLAGE TREE PRUNING SEASON**



A very long list of trees needing pruning and broken and damaged limbs removed will be tended to beginning in late

December and through January. Our arborist says this is the best time to prune. Trees have been reviewed in the summer and fall and needed care has been identified. When you see the Busch Creek trucks cruising the neighborhood know they are out there working for you! The Village office will notify the community when the pruning is complete on the chance that something may have been missed that your eyes see.

**BULK & YARD TRASH PICK UP DATES**



**Bulk Trash Collection:**

**January 14, 2012, March 10, 2012, May 12, 2012**

**Yard Waste Collection:**

**Last Pick Up of 2011: Monday, December 19th**

**First Pick Up of 2012: Monday, March 12th**



**Christmas Tree Collection:**



**Monday, Jan. 2nd & Monday Jan. 9th (also a supplementary yard waste pick up.)**

**‘TIS THE SEASON TO GIVE: PLEASE HELP US REACH OUR GOAL**

The holiday season is a busy time for all of us – but not so busy, we hope, that we forget about our neighbors in need. As in the rest of the nation, families across Montgomery County are being stretched thin by lingering economic woes. Heating bills add up as the weather turns colder, and other living expenses – housing, health insurance, gasoline and car maintenance, clothing and so on – continue to gobble up family budgets, often leaving insufficient funds to put food on the table.



Village residents have helped fill the gap over the course of the year with generous donations to our food drive on behalf of Manna Food Center. To date, we’ve collected and delivered just over 4,400 pounds of non-perishables to Manna’s central warehouse. Even so, that puts us 300 pounds short of our total at this time last year and makes our 5,000 pound goal for the year seem out of reach. **BUT, if each of the 320 families in Martin’s Additions donated just three pounds of food – canned soup, fruit or vegetables, hot or cold cereal, peanut butter and jelly, pasta and sauces, rice, the list goes on – we would easily surpass last year’s 5,000-pound total.**

**AND GIVING IS SO EASY!** The regular collection box remains in place at the stairs leading to the Village Office and from now until the end of the year, there’s a second box in the Brookville Market. Or you can call Dick and Linda Kirschten (301-986-5839) and they will cheerfully swing by to pick up your donation. Next time you’re at the grocery store, please be sure to pick up a few extra items for the Village’s Manna project.

Because of your help Manna was able to provide backpacks of nutritious, kid-friendly foods to some 1,700 students each Friday to tide them over when meals from school feeding programs are unavailable; distribute nearly 3.7 million pounds of fresh and nonperishable foods to Montgomery County families in need, touching more than 38,000 households; and give more than 500,000 pounds of food at no charge to 50 soup kitchens, emergency shelters and food pantries.



## LET IT SNOW, LET IT SNOW. ..SORT OF

While forecasting techniques and snow battling methods have improved, Mother Nature apparently hasn't read the memo and often fails to follow our script. We all remember how severe winter weather can be. We feel fully prepared for what may come our way this winter, but we're still keeping our fingers crossed that it won't be as severe as it was 2 years ago. Here is some important information:

### *What are residents responsible for when it snows?* Sidewalks!

- Your sidewalk(s) **MUST** be shoveled within 24 hours of the end of the storm—it's the law in Montgomery County **and** in Martin's Additions. And, if you live on a corner lot, you must shovel both sidewalks.
- **Remember that if it snows while you are not home, your sidewalk still must be cleared, so be sure to make arrangements in advance.**
- **Park your car(s) in your driveway—the importance of this cannot be stressed enough!** It makes it so much easier, more effective and safer to plow the streets if cars are in the driveway! We can do a much better job clearing your street of snow without maneuvering around parked vehicles.
- ***Keep intersections clear of parked cars if you must park on the street:*** The snow plows are BIG and are slowed down (sometimes prevented completely) by cars parked up close to intersections, especially at Summit Avenue and Thornapple Street and Chestnut and Taylor. Dead end Raymond Street needs to be completely cleared of parked cars.

***What does the Village do to be prepared?*** The Village does everything it can to be prepared to deal with snow and ice that inevitably will stalk us the winter.

- We clean **all the leaves up off the street** before we've seen any flakes so that we're not pushing leaves with the snow.
- The Council will be discussing establishing a formal policy for **one side of the street parking in during snow storms** on streets that currently allow parking on both sides. Those streets are Delfield, Chestnut, Summit, and Melville.
- The Village **Sand Cans are supplied** with a sand and salt mix and a shovel to be used to help rescue stranded motorists, get you out of your driveway, improve traction on that nasty hill in front of your home. Please be a good neighbor and make sure the lids are on the cans tightly so

the mixture does not get wet. Call the Village Office if the bucket needs to be replenished. The Cans will be placed in the following locations. If you wish to have additional cans placed in different locations please call the Village Office.

**Shepherd Street (2) Turner (1)  
Quincy (1) Raymond Street (2)  
Thornapple (2)**

- The plow blades are on the on the trucks.
- The sand and salt loading arrangements have been made. We should be "good to go," as they say.



### ***What can you expect?***

- The **plowing will begin** as soon as there is enough snow on the street to push (**generally at least two inches**). If the snow is coming down in torrents the plowing will start about 2-3" accumulation and continue as additional inches of snow fall. The strategy is left to the experience and knowledge of our very able contractor, Mark Peyton.
- **We generally do not pre-treat our streets with chemicals.** We may immediately treat the fallen snow with salt and/or sand before there is enough snow to plow. Usually two to three inches are required before we actually begin to plow to improve the traction and reduce sliding.

## **"ALERT MONTGOMERY" GOOD SOURCE FOR STORM INFORMATION**

With the coming of winter and increased weather-related emergencies, you are encouraged to sign up for direct and timely electronic alerts about severe weather, traffic problems and other emergencies that may affect you. Go to <https://alert.montgomerycountymd.gov>. You can designate that alerts be sent to one or more of your electronic devices.

### **BEFORE WE "SNOW IT" we'll be shoveling! Get ready.**

The Village is assembling a list of snow shoveling services to help residents clear their sidewalks and driveways this coming winter. Here are some names we have so far. Call the office if you can add to this list!

- ◆ **Verges Services** of Kensington, 301-942-6666
- ◆ **Alfonso Prada Shoveling and Plowing** 240-286-8509
- ◆ **Chris Scarvell**, local resident of Turner Lane, 330-883-5561

## RATS OCCUPY MARTIN'S ADDITIONS



The Village Office has received numerous reports of rats showing their face in Martin's Additions over the last month. Infestations are concentrated in two areas—the Taylor Street and Turner Lane corridor, and Raymond Street. The Village has brought in the County Health Inspector and a representative from WSSC to review the reports and examine selected properties where infestations were reported. We have focused on Taylor Street and Turner Lane and have scheduled a smoke test for Raymond Street that is designed to determine if there are breaks in the sewer lines.

In our evaluation of the problems in the Taylor/Turner area the Health inspector and WSSC inspector and the Village Manager carefully reviewed the Sanitary Sewer work being performed on Turner Lane on the other side of Shepherd Park. Although there was no sign of rats at that site and everything was being properly contained according to the inspectors, there was a general consensus that this work is likely the source of some of the rat problems being experienced. That work will be wrapping up soon but we must eradicate any infestations that have branched out into the community.

If you have seen rodents please share this information with your neighbors. Call the Village Office to report the problem, so that we can work together to get rid of it. Be aware of the areas that are being baited so that you can prevent any problems with the poisons. If you have rats nesting on your property, you will need the cooperation of your neighbors since chances are they too are sheltering or inadvertently feeding rats. You can contact a qualified pest control company to handle the rodent control for you or you can do the job yourself—it's really not that difficult and there are many unscrupulous contractors out there who might be likened to the creatures they are charged with eliminating.

### BIOLOGY LESSON: RAT OR MOUSE?

Rats and mice have adapted to live in close association with people where they cause tremendous damage and spread disease. The two most common rodents encountered by citizens of Montgomery County are the Norway rat and the house mouse. Both of these rodents are good jumpers, climbers, swimmers and gnawers.

**The Common Rat (Norway or Sewer)** has small ears and eyes and is 14 to 18 inches from nose to the tip of the tail. Its fecal droppings: 1/2" to 3/4", long and capsule shaped. The Norway rat is a burrower, usually nesting in a dirt burrow up to 150 feet from its food supply.

**The House Mouse** has large ears, small eyes, a small head and a pointed nose and is 5 to 7 inches from nose to tail tip. Its fecal droppings are 1/8 to 1/4 inches long and are rod-shaped. The house mouse usually nests indoors within stored materials, but can also live outside, burrowing in areas around fields and lawns. Mice often become a problem where they enter homes in the fall seeking warmth. Mice occupy a small territory, traveling only 10 to 30 feet from their nests for food.

### HAS YOUR PROPERTY BEEN "OCCUPIED"? WHAT DO YOU LOOK FOR?

The most important signs of rodents are burrows, droppings, tracks, runways, gnawing, urine stains, odor, live or dead rodents, nests and rodent-gnawed food. Rodents are more apt to be seen or heard shortly after dark and in the early morning.

**Look for rat burrows, especially around concrete slabs and building foundations, under materials stored outdoors and along fencerows or embankments.** A rat's ground burrow will have an irregularly rounded but smooth opening, 2 to 3 inches or larger in diameter—they can be tennis ball size. A mouse's burrow is much smaller. An active burrow entrance will be hard-packed and clear of leaves and other debris. To find out if the burrow is active, **loosely** fill the opening of the hole with dirt. If a rat is still present, it will reopen the hole. Remove droppings and check to see if more appear. Do not completely fill or destroy burrows until after the rodents have been exterminated. Rats **cannot** be eliminated by blocking their burrows.

Rodents use the same runways to move from place to place. Active runways will be clean and smooth, frequently following along a wall or fence. Along well-used runways, the oils from the rodent's fur leave dirty, greasy rub marks on the areas they frequently touch. Because the incisor teeth of rodents grow continuously, they must gnaw to keep them worn down. You may find gnawed wood or other items.

*(continued on next page)*

## WHY HAVE THEY TAKEN UP RESIDENCE?

Rats come into the community because they are looking for food—you provide it and they will stay, hoping for another meal. You may be very careful about how you store your household garbage but if you let the apples from your tree lie on the ground or feed your dog outside, you are inviting rodents to dinner. Know what else they want this time of year — a nice warm place to live! They will burrow into the ground and get into your house if there is a nearby food source either in the house or in the ‘hood. They can enter your home through a hole as small as a nickel.

## NOW WHAT DO WE DO?

### *Don't attract them-*

- DO NOT** store garbage outside in plastic bags. Plastic garbage bags are not rodent-proof. Plastic bags should only be used inside garbage cans with tight fitting lids.
- DO NOT** allow birdseed to accumulate on the ground. Do not leave pet food outside. Store pet food or birdseed in container with a tight fitting lid.
- DO NOT** leave ripe fruit and vegetables under trees or in the garden to decay.
- DO NOT** place food scraps in compost piles.
- DO** remove any piles of debris or building material such as old brick or boards that may provide shelter for rodents.
- DO** clear brush, weeds and heavy ground covers, especially around foundations.



### *Do not provide them housing-*

Rodents can enter homes through open or unscreened doors and windows, ventilators, floor drains, cracks and breaks in foundations and holes around electric conduits and pipes where they enter foundations or go through floors and walls. Rats and mice require only a very small opening to gain entry.

Rats can gnaw a hole if they find a chipped or indented edge from which to start. Close all openings and cover edges that can be chewed with gnaw-proof materials such as sheet metal, cement or hardware cloth.

Doors should close tightly with no gaps at the bottom. All windows, especially basement windows near ground level should have tight fitting screens.

Seal openings around pipes or conduits. Where pipes enter wood, nail sheet metal around the pipe. Where pipes enter masonry, use sealant putty, or spray petroleum-based foam into the space.

### *Get rid of them by..*

#### **-Poisoning**

There are single feeding and multiple-feeding poison baits. Multiple-feeding, anticoagulant baits must be eaten repeatedly for several days before the rodent dies. This offers some protection for a child or pet that may accidentally eat the bait. Single-feeding baits can kill a rodent after only one feeding although it may take up to five days for death to occur if the bait is an anticoagulant.

- **DO NOT** place poison bait or bait packs in the open. Make sure children or pets cannot reach the bait. Place the bait in commercially available bait boxes. Be sure to read and follow all the directions on the package.
- **DO NOT** put bait stations out as a precautionary measure if you see no evidence of rats—you may be inadvertently ATTRACTING them by doing this. **REMEMBER—baits are toxic poisons!**
- Rats are wary of new objects and foods in their environment, so bait boxes or traps may be avoided at first. Check the bait daily and replace it as needed.
- Mice are not suspicious of new foods, but can be difficult to control with anticoagulant baits. They are nibblers so they may not eat enough to get a lethal dose. Also, some mice are resistant to certain anticoagulants.

#### **-Trapping**

Rodent snap traps or glue boards can be useful in situations where poison baits could be hazardous to children, pets or wildlife. Place traps or glue boards only in hidden, out-of-the-way places where children and pets can't touch them.

- Purchase a snap trap with an enlarged bait trigger. To bait the trap, smear peanut butter in the center of the trigger. Other baits are bacon, oatmeal, gumdrops and apples. Traps should be placed perpendicular to a wall or runway with bait next to the wall.
- A glue board is a tray containing a non-toxic strong adhesive. When a rodent steps onto the tray, it is held there by the glue and can then be disposed of; many people find this difficult. Bait can be added to the middle of the glue board or the board and bait can be placed inside a bait box. It is very important to place traps or glue boards in the pathways normally used by the rodents.

## NEW BETHESDA POLICE DISTRICT COMMANDER WELCOMED TO MARTIN'S ADDITIONS



Captain David Falcinelli, the new Montgomery County Police Department Bethesda District Commander, accompanied by our beat Officer Steve Gaynor, were welcomed to the Village of Martin's Additions at the November Council Meeting. Falcinelli is a graduate of Notre Dame and began his career as a CPA; he changed career paths by joining the police academy in 1988. He moved up through the ranks being promoted to sergeant, then lieutenant, and attained the rank of captain in 2005. He served as Deputy Director of Special Operations Division and coordinated many major special events in the County. Officer Gaynor has been a police officer for 24 years and with the County for 12 years. He has three children and loves small towns. Falcinelli also called out two excellent officers at the Bethesda District that help frequently with the care of Martin's Additions: Officers Denise Gill and Dana Stroman

The Captain began his report with the good news—the Bethesda area has experienced a 40% reduction in robberies, a 27% reduction in assaults and a reduction in commercial burglaries. Unfortunately residential burglaries were up slightly earlier this year with an increase of about 5%. Thefts from autos have skyrocketed 44%.

Special assignment officers have spent a lot of time in Chevy Chase. The Field Interrogation Detectives Bureau has improved crime incident follow-up. Forensics has improved greatly and plays an important role in helping to catch the criminals and close cases. Recently a major professional burglary ring out of New York City was busted in Potomac. The police believe this group has played a large role in local crime.

The Commander checked the recent statistics on Martin's Addition and reported that the main problem is property crime—the recent Village log showed one burglary, 11 thefts from autos (10 of those were from vehicles left unlocked), one assault and one theft from a job site. Most of the break-ins occurred in August.

Commander Falcinelli touched on ways that residents can stay safe. His first and foremost piece of advice: **don't make yourself a victim. Some thieves come back to any area they find easy pickings—make it hard for them. Martin's Additions residents have been making it easy for these criminals.**

- Lock your car.
- Remove valuables or keep them out of sight in the car.
- Remove your GPS and the suction cup marks on your windshield.
- Keep your outside lights on. Install motion lights.
- Do not use a "Hide-a-Key-Rock".
- Make plans for mail, newspapers, put lights on timers and let your neighbors when you are out of town.
- Make a list of all the serial numbers on items that have them—that is the only way the police can return recovered property.
- Use your alarm system properly: do not rely on the alarm company to call the police because an alarm call is not considered a priority call—call them yourself. Ninety eight percent of alarms are deemed to be false alarms. Audible rather than silent alarms are preferred because noise deters criminals.
- Call the police non-emergency number at 301-279-8000 if you see anyone suspicious (put this number on your cell phone) and 911 for a crime in progress. You can remain anonymous. Do not try to intervene or confront the people yourself.

Several residents had follow up questions. If residents have a concern about the response of any officer, Falcinelli urged that a call be placed to the Bethesda Station's Captain of the Internal Affairs' Division. Falcinelli closed his remarks noting the budget crisis in the county and how it has affected staffing levels in the police department. The levels are far from ideal; each shift is staffed at half the officer-to-resident-ratio that he would like to see. Currently there is a maximum of 13 patrol officers on duty to cover the entire District. He said he could use another 13 officers if the budget allowed.





## CHEVY CHASE LAKE AREA DEVELOPMENT UPDATE

At a meeting with representatives of nearby communities (the Connecticut Avenue Corridor Committee or CACC) last month, the Chevy Chase Land Company presented some new ideas for the development of the area just north of Martin's Additions, known as Chevy Chase Lake. Another meeting was held in early December to review possible open space design options. Neighboring communities continue to push for lower densities and lower building heights. Here are the proposals from the Chevy Chase Land Company (CCLC) at the November meeting:

- CCLC is proposing 1.5 million square feet of development on Land Company Holdings; 1.2 million would be new net square footage.
- They anticipate the total build-out of their properties to be over a 15-20 year horizon; They anticipate that the majority of their new development will focus on residential.
- They have taken off the table development of the eastern-most portion of their property which currently has town homes and apartments on it (the residential properties behind the shopping center parking lot – Block C on their originally presented plans shown at the 4-H Center last summer).
- They are no longer planning on developing the Housing Opportunity Commission's property with the HOC;
- They have reduced the density proposed at the first presentation for their own holdings by 350,000 square feet;
- The first phase of development is **Block B-1** or the **TW Perry site**. This area would be developed without the completion of the Purple Line: 439,000 square feet total development, with one 150 feet tall residential/retail building and another 100 foot tall hotel. The entire block would be joined together by 1 story of retail space for a future supermarket.
- Post Purple Line they would develop **Block B-2** or the **area east of the current supermarket**. This area would include residences 5 stories tall on Manor Road and south of them, one building of 150 feet tall or 13 stories (38,500 square feet of retail and 297,000 square feet of residential).
- **Block A** would be the next area to be developed or the area west of Connecticut Avenue where the **Starbucks and Einstein Bagels are**. This area would include a total mix of 171,000 square feet of

residential, retail and offices; 6 stories on Connecticut and 4 stories toward Chevy Chase.

- The final block to be developed would be **Block D** where the **current Chevy Chase Land Company offices** are located at the corner of Connecticut and Chevy Chase Lake Drive. That plan is for 586,850 total square footage of offices, residences and retail space. These buildings would be 200 feet tall (taller than the current Chevy Chase Land Company Building).

The CACC representatives felt that they would like to continue conversations with the Land Company, believing that even 1.5 million square feet is still too much density for the area, particularly in light of the fact that other build-out options that rest with the Housing Opportunity Commission (HOC) and Newdale Mews properties are still unknowns in the equation. There was consensus that the building heights on the east side of Connecticut Avenue are still too high. In particular, concerns were expressed that:

- Some of the buildings seem even higher than outlined at the first presentation (in particular, the buildings in Block D);
- The height of buildings along the borders of Connecticut Avenue, Chevy Chase Lake Drive, and Manor Drive create a tall wall-effect, or blockade, that feels impenetrable to the neighboring communities;
- The use of retail space on the first levels linking all the buildings together minimizes the green space or open air quality of the blocks, particularly at Block B-1.

CACC representatives felt that the intention of the Planning Commission's Staff report was to create a community of interconnected walkways and mid-sized buildings that allow for a more human-scaled residential community.

CCLC's proposal have taken on a more residential quality than earlier proposals, but it would seem that they did not work from the Planning Staff's report but rather lopped a portion of their property out of the equation and did not alter significantly the areas still proposed for development. Factoring potential proposals from the Newdale Mews owner and the HOC, a total of 2 million square feet is being proposed for the sector area, about 800,000 square feet more than the Planning Staff proposal. It is likely that any traffic analyses of these proposals will show that it is just not possible to expand development to that extent in this location. We will keep you posted.

## HOLIDAY SAFETY TIPS:



### FIRE

Here are safety tips to ensure that you have a fire safe holiday season:

**Christmas Trees:** Keep the tree watered. Well-watered trees are not a problem. A dry and neglected tree can be.

**Selecting a Tree for the Holidays:** Needles on fresh trees should be green and hard to pull back from the branches, and the needles should not break if the tree has been freshly cut. The trunk should be sticky to the touch. To spot an old tree by bouncing the tree trunk on the ground. If many needles fall off, the tree was cut too long and is a fire hazard.

**Caring for Your Tree:** Do not place your tree close to a heat source, including a fireplace or heat vent. Heat will dry out the tree, causing it to be more easily ignited by heat, flame or sparks. Do not drop or flick cigarette ashes near a tree. Do not leave it up for longer than two weeks. Keep the tree stand filled with water at all times.

**Disposing of Your Tree:** Never put tree branches or needles in a fireplace or wood-burning stove. When the tree becomes dry, discard it promptly. Martin's Additions will have two tree pickups in January: Monday, Jan. 2nd and Monday, Jan. 9th. Move your trees to the curb!

**Maintain Your Holiday Lights:** Inspect holiday lights each year for frayed wires, bare spots, gaps in the insulation, broken or cracked sockets, and excessive kinking or wear before putting them up. Use only lighting listed by an approved testing laboratory.

**Do Not Overload Electrical Outlets:** Do not link more than three light strands, unless the directions indicate it is safe. Connect strings of lights to an extension cord before plugging the cord into the outlet. Make sure to periodically check the wires – they should not be warm to the touch. *Do not leave holiday lights on when you are not in the room!*

**Use Only Nonflammable Decorations:** All decorations should be nonflammable or flame-retardant and placed away from heat vents. If you are using a metallic or artificial tree, make sure it is flame retardant.

**Never Put Wrapping Paper in the Fireplace:** it can result in a very large fire, throwing off dangerous sparks and embers that may result in a chimney fire.

**Avoid Using Lit Candles:** If you do use lit candles, make sure they are in stable holders and place them where they cannot be easily knocked down. Never leave the house with candles burning.

**Never Put Lit Candles on a Tree:** Do not go near a Christmas tree with an open flame – candles, lighters or matches.

### CARBON MONOXIDE

Protect your family from deadly carbon monoxide poisoning: install a CO detector. Remember: you still need to have smoke alarms in your home. Carbon monoxide detectors do not detect smoke and vice versa.

#### Facts

**CO is a produced** anytime a fuel is burned, including gas or oil furnaces, water heaters, space heaters, clothes dryers, barbecue grills, fireplaces, wood-burning stoves, gas ovens, generators and car exhaust fumes.

**Every year more than 10,000 people die** or seek medical attention due to CO poisoning from home-related products. More than two-thirds of Americans use gas, wood, kerosene or another fuel as their home's major heat source. 65% of CO poisoning deaths from consumer products are due to heating systems. Only 27% of homes in America have carbon monoxide alarms, according to recent industry research. CO poisoning deaths from portable generators have doubled for the past two years, and many of these deaths occurred in the winter months and during power outages.

**An idling vehicle** in an attached garage, even with the garage door opened, can produce concentrated amounts of CO that can enter your home through the garage door or nearby windows.

**A poorly maintained gas stove** can give off twice the amount of CO than one in good working order.

#### Prevention

**Install** at least one battery-powered CO alarm or AC-powered unit with battery backup on each level of your home and near sleeping areas.

**Have a licensed professional** inspect heating systems and other fuel-burning appliances annually. Install these appliances properly and operate according to the manufacturer's instructions.

**Keep chimneys clear** of animal nests, leaves and residue to ensure proper venting. Have all fireplaces cleaned and inspected annually.

**Do not block or seal** shut the exhaust flues or ducts used by water heaters, ranges and clothes dryers.

**Do not** use ovens or stoves to heat your home.

**Check** all carbon monoxide alarms in your home. Do they use the most accurate sensing technology? Do they need new batteries?

**Replace CO alarms** every five to seven years in order to benefit from the latest technology upgrades.

**Never** put a home generator in your home or attached garage while in use.



## OUT AND ABOUT THE VILLAGE

◆ Welcome to **Jennifer and Erik Garr** at 3504 Shepherd Street and daughters **Katie (6) and Sarah (3)**. They have an old English Sheep dog named “Tucker.” They moved from Chicago two years ago, rented a place in the greater Bethesda-Chevy Chase area, expecting to stay for a brief period. They decided to stay and are now delighted to be moving into Martin’s Additions (but of course!)

◆ It is with great sadness that the Village of Martin’s Additions has to **say goodbye to Hal Bruno**, longtime VMA resident of Cummings Lane, ABC News Political Director, fire safety advocate, fire department supporter and Chevy Chase Fire Board representative. Hal died November 8 after a fall at his home. He was 83.



Mr. Bruno was a pioneer of political journalism and helped guide ABC’s political coverage through most of the ’80s and ’90s, before leaving in 1999 to serve as director of the National Fallen Firefighter’s Foundation. He was a major presence in the ABC News Washington bureau until his retirement in 1999.

“Politics was his first love. But firefighting was his second passion,” said Glennwood Branche, who is vice president for operations at the Washington bureau. He was also a nationally recognized authority on fire safety and served for almost 60 years as an active volunteer firefighter. Mr. Bruno was also an avid fisherman, an excellent skier, a loyal Chicago Cubs fan and, according to an old ABC News biography, “a terrible tennis player.” For many years he was captain of the ABC softball team and played guitar in a bluegrass band made up of Washington newsmen.

Bruno served as an Army intelligence officer during the Korean War. In 1956, he was awarded a Fulbright Scholarship to India, where he conducted a study of Indian media and filed stories for the International News Service. Some of his unique foreign assignments included both sides of the Arab-Israeli conflict, the Cuban revolution and the Chinese-Indian War in the Himalayan Mountains. Hal is survived by wife Margaret, two sons and four grandchildren.



## CHEVY CHASE AT HOME CELEBRATES SUCCESSFUL FIRST YEAR

As 2011 comes to a close, CC@ H is looking back on a successful first year of service to the community’s older residents. They have 84 member households and a wonderful group of trained volunteers, who are truly the heartbeat of the organization. Volunteering is its own reward; neighbors of all ages are urged to consider becoming a CC@ H volunteer in 2012. Spend a few hours each month assisting with one or more of the services offered to members. While transportation has been the number one request, there are many other services that might suit your schedule, skills, and preferences (including stay-at-home tasks such as answering forwarded phone calls to the central CC@H number or making phone calls to those who might not get out much). There are many committees that volunteers can join: Communications, Community Service Providers, Development, Membership, Social Networking and Programs, and Volunteer Services. It’s not only worthwhile, it’s also fun! To volunteer, email: [volunteers@chevychaseathome.org](mailto:volunteers@chevychaseathome.org) or call 301-657-3115. To learn more about CC@ H, visit the website at [www.chevychaseathome.org](http://www.chevychaseathome.org). Meet & Mingle programs will resume in January, 2012. In the meantime, Happy Holidays To All From Chevy Chase At Home!

## CHEVY CHASE AT HOME SEEKS EXECUTIVE DIRECTOR

Chevy Chase At Home is seeking a part-time Executive Director. The new paid position emphasizes member service, managing the office and volunteer services, program planning and implementation, close cooperation with the organization’s active Board and Committees, fund-raising and public outreach. For a detailed job description and application procedure, find the posting at: <http://www.idealists.org/view/job/pFbgGijxZwmD>

## SHARE WHAT YOU NO LONGER NEED

*A Wider Circle* charity, which is located in Bethesda, would be delighted to pick up your unwanted household goods. Call 301-657-1010 to donate; visit [www.awidercircle.org](http://www.awidercircle.org) to learn more.

## CHEVY CHASE LIBRARY EVENTS



Four book groups – the **Fiction, Memoir and Biography Book Group**, the **Non-Fiction Book Group**, the **Teen Book Club** and the **Great Books Discussion Group** – as well as the **Jefferson Café**, a

discussion group focusing on topics in American life and the role of the United States in the global community, meet in the Library’s downstairs meeting room.

- The **Non-Fiction Book Group** will discuss The Worst Hard Time: The Untold Story of Those who Survived the Great American Dust Bowl by Timothy Egan. The session will take place on **Wednesday, December 14 at 2:30 p.m.** There is no need to register. One only needs to obtain a copy of the book – there should be enough copies available within the Montgomery County Library System – and show up.
- The **Great Books Discussion Group** will discuss The Elegant Universe by Brian Greene. The session will take place on **Wednesday, December 14 from 7:30 to 9:30 p.m.**
- The **Jefferson Café** will discuss “Globalization for Whom?” by Dani Rodrik (from the July-August 2002 issue of Harvard Magazine). The session will take place on **Friday, December 16 from 10:30 a.m. to 11:30 a.m.** Participants can obtain copies of the article at the reference desk at the Library.
- The **Teen Book Club** will meet on **Saturday, December 17, starting at noon.** The book to be discussed will be Ender’s Game by Orson Scott Card. Pizza will be served. The session is recommended for middle schoolers and older. Those who want to participate need to register at the reference desk at the Library and obtain a copy of the book.
- The **Fiction, Memoir and Biography Book Group** will discuss Master and Commander by Patrick O’Brian. The session will take place on **Wednesday, December 28 at 2:30 p.m.** The “rules” are the same as for the Non-Fiction Book Group.

**\*\*Special Library Event:** In addition to the book group and Jefferson Café sessions described above, there will be an author talk and book signing on December 15: “Clutter and What to Do About It,” a program by Marcie Lovett, professional organizer and productivity consultant and author of the Clutter Book: When You Can’t Let Go. The program, which will be from 10:30 a.m. to noon, is geared toward seniors and others who are moving or getting ready for tax preparation.

## VOLUNTEER OPPORTUNITY ON MLK DAY OF SERVICE!



On Monday, January 16, 2012, Montgomery County will celebrate the Martin Luther King, Jr. Day of Service. The county’s main celebration will take place at the North Bethesda Marriott Hotel and Conference Center (not the hotel)

at 5701 Marinelli Road, North Bethesda, MD from 1 to 3 pm. The Marriott is located near the White Flint Metro Station. There will be parking available. Service learning hours can be earned.

The event will include 1. Making sandwiches which will be delivered to local homeless shelters. (sponsored by Whole Foods); 2. Making fleece blankets for Montgomery County Hospice; 3. Packing snow day boxes of food for Meals on Wheels; 4. Making small gift items to be given to sick children at the NIH. (All supplies are provided); 5. Making at the December meeting Valentine cards for people in nursing homes.

There will also be a volunteer fair at the same time where you can learn about other volunteer opportunities in the county. There will be a sign-in table but it’s best to register in advance. Go to <http://www.montgomeryserves.org/mlk-day-service-2012>.

## WHO DO YOU USE TO SHOVEL YOUR SNOW?



If you can make a referral for a snow shoveling service you have used, please forward the information to the office at [martinsadditions@verizon.net](mailto:martinsadditions@verizon.net) or 301-656-4112. We will continue to update our Snow Services List in an effort to help residents be prepared.



Village of Martin's Additions  
7013 B Brookville Road  
Chevy Chase, MD 20815

#### VILLAGE COUNCIL AND STAFF

**Arthur Alexander** 301-718-9787

3517 Raymond Street  
[arthur.alexander@att.net](mailto:arthur.alexander@att.net)

**Chris Mueller** 301-718-9687

3509 Shepherd Street  
[christophjmueller@yahoo.com](mailto:christophjmueller@yahoo.com)

**Jill Filipczyk** 301-656-5566

301-3510 Taylor Street  
[jill.filipczyk@gsa.gov](mailto:jill.filipczyk@gsa.gov)

**Richard Krajeck** 301-654-3663

3500 Bradley Lane  
[rkrajeck@hotmail.com](mailto:rkrajeck@hotmail.com)

**Michael Zielinski** 301-654-1748

3418 Turner Lane  
[mzatvma@gmail.com](mailto:mzatvma@gmail.com)

**Village Office** 301-656-4112; FAX 301-656-0030

**Jean Sperling**, Manager

**Deb Schmal**, Assistant Manager

email: [martinsadditions@verizon.net](mailto:martinsadditions@verizon.net)

Website: [www.martinsadditions.org](http://www.martinsadditions.org)

#### MVA MOBILE OFFICE COMES TO CHEVY CHASE

The MVA mobile office is coming back to Chevy Chase in 2012. Friendship Heights Village hosts the mobile office as it has done for the past 14 years. It provides all the services that are available at the MVA Express Offices, such as renewing driver's licenses, renewing vehicle registrations, renewing MD photo identifications, obtaining disability placards, and returning tags.

The bus will park on Friendship Blvd., adjacent to the Village Center from 10 am to 2 pm. on January 23, February 27, March 19, April 23, May 21 and June 18.

#### CHECK THE VISIBILITY OF YOUR HOUSE NUMBERS!

We've stressed before how important it is for emergency personnel to be able to find your house number. PEPCO has informed us that it is equally important for them to have visible house numbers so that they can easily identify addresses during outages. Check your house number!

#### Village Council Meetings and Agenda Notice

Council meetings are generally scheduled for every **third Thursday of the month and begin at 7:30 pm** in the Village Office located at 7013 B Brookville Road, unless otherwise posted. The Meeting Agenda is posted on the Village Bulletin Board outside the Brookville Supermarket prior to the meeting and on the Village website [www.martinsadditions.org](http://www.martinsadditions.org) on the

Friday before the meeting. Contact the Village Office if you wish to have an item considered for placement on the meeting agenda at least two weeks in advance of the meeting. A complete copy of meeting minutes are available in the Village Office, posted on the bulletin board and available on our website.