
Martin's Edition

A Newsletter for the Village of Martin's Additions to Chevy Chase



NOTES FROM THE COUNCIL CHAIRMAN

It seems like just yesterday that we were presenting budget information for fiscal year 2011 to Village residents, but it is already time to start the preliminary process for the development of the FY 2012 budget!

One of the first documents that we receive that kicks off our budget process is a letter from the Maryland State Department of Assessments. The purpose of this letter is to establish the constant yield property tax rate for the Village. This year's letter shows that the overall value of the property and buildings in our Village has decreased from \$365,395,940 to \$292,443,986, a drop of nearly 20%. I am baffled why our property rates decreased so dramatically, so I called nearby villages to see how our experience compares.

Just a review of the State assessment procedure: Each county has a tax assessment office. One third of each county is reassessed each year. The map of Montgomery County showing how it is divided into thirds is difficult to read, but there is a little section of our part of southern Montgomery County that was included in this year's reassessment. The bulk of the reassessments took place in the northern areas of the County.

A review of property assessments from 2010 to 2011 in surrounding municipalities revealed a wide disparity. Chevy Chase Village saw a decrease of 14.4%; the Town of Chevy Chase, a decrease of 4.4%; Chevy Chase Section 3, a decrease of 12.5%; Chevy Chase Section 5, a decrease of 16.4%; and Chevy Chase View, an increase of 3.5%.

The Village of Martin's Additions saw a decrease of 20% in property assessments. I have asked a number of local realtors why this drop is so dramatic. There seems to be no single theory, but lots of thoughts: higher valued houses have seen large decreases; the market is saturated; there isn't as much

(Continued on next page)

MARCH 2011

◆ **COMMUNITY FORUM MARCH 12**

A Community Forum on Saturday, March 12 in the Village Office will feature a discussion about getting involved in your community. Breakfast treats and coffee will be served beginning at 10:30 AM. Details on page 2.

◆ **BULK TRASH PICKUP MARCH 12**

Saturday, March 12, 2011. Have your items at the curb by 7 am. Next pick-up will be May 14.

◆ **YARD TRASH PICKUP RESUMES MONDAY, MARCH 14**

All yard debris will be picked up from the curb beginning Monday March 14. Debris needs to be bagged and sticks /branches bundled and tied.

◆ **NOMINATION PERIOD FOR COUNCIL OPEN**

The terms of two Council members expire on June 30. Nominations for candidates open on February 28 and close April 8.

◆ **TAX FILING INFORMATION FOR RESIDENTS OF MARTIN'S ADDITIONS**

The Village receives a share of the income tax you pay to Maryland. Be sure to Note "Martin's Additions" on your MD Form 502 in the space titled "City, Town or Taxing Area."

Village Council Meetings and Agenda Notice

Council meetings are held every **third Thursday of the month at 7:30 pm** in the Village Office located at 7013 B Brookville Road. The Meeting Agenda is posted on the Village Bulletin Board outside the Brookville Supermarket prior to the meeting and on the Village website www.martinsadditions.org on the Friday before the meeting. Contact the Village Office if you wish to have an item considered for placement on the agenda at least two weeks in advance of the meeting. A complete copy of meeting minutes are available in the Village Office, posted on the bulletin board and available on our website.

speculative money—or it is hard or expensive to find money. This position seems to be a difficult one to defend if we simply look around and see houses still being torn down and replaced, as is immediately apparent on my street.

The bottom line for the Village is that when we look at income for this next fiscal year, our constant yield tax rate (the tax rate it will take to maintain income from last year to next year) will be technically higher. From a practical standpoint, the actual cost to the homeowner should be unchanged. On the plus side, with the rather dramatic reduction in our Villages' assessed values—more than surrounding villages—we could see a reduction in our individual County property tax payment. But that is complicated because eligibility for the Homestead Tax Credit is also part of any property tax payment.

So, the message I want you to hear is: 1) Our Village saw a larger decrease in property values than surrounding municipalities; 2) It affects our income from local property tax that may have to be addressed during our Village budget process; and 3) Individual home owners' could benefit from lower County tax payments—but I am not promising that.

Richard Krajeck

DON'T MISS THIS COMMUNITY FORUM SATURDAY, MARCH 12, 10:30 TO NOON

All residents are invited to join current and former Village Council Members and Village staff on **Saturday, March 12 from 10:30 to noon** in the **Village Office**. You'll get to enjoy a hot cup of coffee and breakfast treats with your neighbors. You can find out what it's like to be on the Village Council and learn about other ways to volunteer and get involved in your own community. We expect to have a spirited, informal discussion of matters and issues such as budgets and financial outlooks, nearby development plans such as Chevy Chase Lake, and the management of storm water, and to identify other topics that impact residents of the Village of Martin's Additions. Bring your neighbors! Sponsored by the Election and Ethics Committee.

HELP PEPCO HELP YOU!

When you experience a power outage it is **OF THE UTMOST IMPORTANCE** that you to **call PEPCO to report it**. YOU MUST NOT rely on your neighbor to report for the whole street. PEPCO prioritizes repairs and seeks the source of the outage based on the number and location of homes that report an outage. **The Village office cannot be of any help** at this initial stage of the outage problem. You must call PEPCO. **To report a power outage** with no life-threatening situation call: 1-877-737-2662 and press one for the automated system. They will repeat back to you your house address number and ask you to confirm that their system information is correct. Again, this is another really important reason for your house numbers to be easily visible from the street! **To report an emergency life threatening situation** such as downed wires, a pole down, etc. call 1-877-737-2662 and press two. Do not use option two if the situation IS NOT life threatening because it will prevent customers with actual emergencies from getting through.

ELECTIONS AND ETHICS COMMITTEE

Frank Correl, Chairman,
3505 Turner Lane, 301-951-6211
fdcurrel@yahoo.com

Ted Stoddard, 3500 Turner Lane, 301-652-4256
tedstod@verizon.net

Noell Sottile, 3508 Cummings Lane, 301-654-7898
noniesings@hotmail.com

Village of Martin's Additions ELECTIONS SCHEDULE 2011

Terms Expiring for:

Chris Mueller and Mike Zielinski



Monday February 28, 2011: Nominations Open.

Saturday, March 12, Village Roundtable I: "Participating in Your Community" 10:30-Noon, Village Office

Friday, April 8, 2011: Deadline for Submitting Nominations.

Thursday, April 14, 2011: Candidates Statements & Biographical Sketch due into the VMA Office.

Thursday April 21, 2011: Monthly Council Meeting. Candidates' introduction.

Saturday, April 30, 2011 Village Roundtable II: "Candidates Forum" 10:30 - Noon, Village Office

Thursday, May 12, 2011: Council Election, Brookville Village Center 6 - 8 PM

VILLAGE MEETS WITH PEPCO TO REVIEW

TREE PRUNING AND REMOVAL



In early March, the Village Manager Jean Sperling, the Village arborist Paul Wolfe, and the Village Tree Supervisor, Dan Gardener, met with a

certified Arborist and Utility Specialist from PEPCO's subcontractor, Utilimap Corporation, to review their findings regarding the condition of many trees in the northern end of Martin's Additions. Utilimap was formed in October of 2001 to offer GIS and engineering services to the utility industry. Their services focus on Utility Asset Management. Utilimap is contracted to provide vegetation management services to Pepco which include pre-planning tree work and coordinating tree work with private customers along with federal, state, and local authorities.

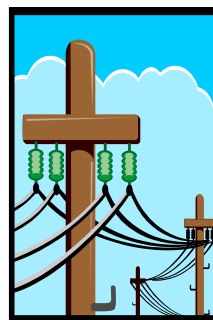
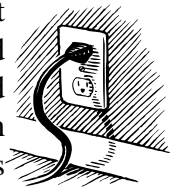
As a part of the priority repair designation given to the feeder line that delivers power to the north end of Martin's Additions, PEPCO's arborists have examined the trees in the area and determined which ones should be removed and which ones pruned. They are now operating under a "Blue Sky Policy"—that is, they want to be able to see blue sky when they look up at the wires. This can call for significant pruning of the central parts of the trees whose limbs and branches are in the wires. Many residents of Summit Avenue and Thornapple Street may have noticed the large red dots on select trees along their streets.

In all, some 14 trees have been marked for removal; 12 on public property and 2 on private property. Many others will be pruned. PEPCO is required to get permission from residents to remove or prune trees that are on private property. All residents should have received a notice, in the form of a door hanger, informing them that the trees in the area will be worked on. The Village will confirm that we are working from the same sheet of music, as they say, and that everyone understands what is planned.

The Village Office will keep in close contact with the crews and attempt to keep you as informed as we can of the timing and progress of the work. We were informed that work is expected to begin at the end of March or early April. No Parking signs will be posted in the areas where the tree crews will be working. You are asked to please be sure to comply with the No Parking requests so that the crews can complete the work and you can avoid damage to your car.

ENERGY SAVING WORKSHOP ON SATURDAY, MARCH 19

Learn how to save on your energy bill at the Green Fair sponsored by Kenwood Forest and the Maryland Energy and Sustainability Co-op on Saturday, March 19 from 10:00 am - 2:30 pm at St. John's Episcopal Church at 6701 Wisconsin Ave. (at the north east corner of Bradley Blvd. and Wisconsin Ave.) Meet representatives from companies specializing in: wind and/or discounted electricity (bring your PEPCO bill), energy efficient windows/doors/lighting, attic ventilation, home energy audits and insulation, heating and air conditioning, green building supplies, chimney/flue systems, rain barrels, solar energy systems, energy star appliances, green home remodeling, and much more. Light refreshments will be served. Contact Glenn at 301-312-6929 or Vicky at 301-654-1794 if you have questions.



RIGHT TREE, RIGHT PLACE: PREVENTING FUTURE TREE-ELECTRIC LINE PROBLEMS

Trees make our Village beautiful, lending shade to our homes, sidewalks and streets. But, when a tree that will grow too large or too tall is planted under or near electric power lines, that tree can cause power outages, as many residents of Martin's Additions have experienced. The National Arbor Foundation and our own arborist advocate a policy of "right tree, right place," under which all trees

(Continued on next page)

are planted where they can thrive and won't interfere with, among other things, the power lines.

Tall trees such as maple, sycamore, oak, spruce, pine and birch should be planted more than 50 feet from power line wires. Plant medium trees (those that grow to a height of 40 feet or less) such as honey locust, Serviceberry or Hornbeam, at least 20 feet from power lines. Small trees that grow slowly and to no more than 25 feet in height, such as dogwood, flowering cherry, crabapple, purple leaf plum and Japanese red maple, are recommended for areas close to power lines. Visit their website at <http://www.arboday.org> for information on their Tree Line USA program.

It is important for residents to remember NOT to plant any trees in the Village public right-of-way. The Village arborist determines what kind of tree to plant and where to plant it. (Adapted from a PEPCO publication.)



STORM WATER MANAGEMENT MATTERS: RAINSAPES

Storm water runoff is created whenever it rains or snows. In undeveloped areas, this runoff is generally harmless as it soaks into the ground and gradually joins local streams, rivers, lakes, and estuaries. But in developed urban and suburban areas like ours, the runoff can be much more destructive. Our urban landscape includes driveways, streets, rooftops, and other impervious surfaces, and the precipitation doesn't soak into the ground and the volume of runoff increases, causing flooding and erosion. Moreover, the runoff accumulates pollutants—such as pesticides, fertilizers, bacteria, and trash—which are then washed into the downstream waters.

Storm water from our homes enters the Village drainage system and ultimately finds its way to the Chesapeake Bay. The Environmental Protection Agency has indicated that restrictions on runoff will be required to meet pollution reduction goals for the Bay. While Montgomery County requires plans for storm water control when granting permits for large construction projects, residents of already-developed properties can also help to reduce storm water runoff and pollution through the use of on-lot capture and treatment practices.

The Montgomery County RainScapes Program is designed to encourage individual homeowners to retrofit their properties utilizing storm water management practices. These can include the installation of rain gardens, rain barrels and cisterns, permeable pavement, green roofs, tree plantings, dry wells, and conservation landscaping, all of which hold storm water on the site, reducing the volume of water and pollutants draining into local streams.

The County offers technical and educational assistance to encourage property owners to implement RainScapes techniques on their property. The County may also provide financial rebates—up to \$1,200 per residential lot—to homeowners who wish to retrofit their property by installing an eligible RainScapes technique.

For homeowners not yet ready to install a RainScape, the County also recommends everyday steps they can take, such as environmentally friendly landscaping and composting of yard waste, to reduce storm water runoff from their yards. Visit www.montgomerycountymd.gov/rainscapes for more information. (Contributed by Barbara Bares, member VMA Storm Water Task Force)

CC HISTORICAL SOCIETY ASKS FOR MORE INVOLVEMENT

Bridget Hartman, president of the Chevy Chase Historical Society (CCHS), and Executive Director of the CCHS, Stephanie Brown, gave an overview of Society projects at the February Village Council meeting. The Society participated in last year's 25th Anniversary of Incorporation Celebration and at VMA's Celebration on the Sidewalk. This involvement is an example of the changes that the new CCHS administration would like to see. Society representatives plan to attend upcoming community events held in Martin's Addition. They'd like to welcome more members to the CCHS and to expose the community to the wonderful information available at the Society on the history of our area. They recently received a grant from the Arts and Humanities Council that they are using to build an online data base to expand municipality-specific information into the collection. They also want to add to their Oral Histories Collection. The CCHS is always looking for historical documents and photos and for people to participate in their oral history project.

The Historical Society is located on the lower level of the Chevy Chase Library at 8005 Connecticut Avenue (next to the firehouse). Their phone number is 301-656-6141 and their email address is chevychasehistory@msn.com. Call before you visit as their hours are limited.

CHEVY CHASE LAKE SECTOR PLAN COMMUNITY DESIGN WORKSHOPS



What The Chevy Chase Lake Sector Plan Community Design Workshops are being held on Saturday, March 12 to provide an opportunity for all interested persons to get and give more information on future growth and development of this area.

Who is Invited: These workshops are open to all residents, property owners, businesses, organizations, and any other parties interested in development of the Chevy Chase Lake area.

When and Where: Saturday March 12, 11am to 4 pm. The Chevy Chase Library, 8005 Connecticut Avenue, next to the firehouse. Ample parking is available.

Format: Each workshop will cover the same material and accommodate a limited number of people. These one-hour sessions will begin at 11:00 am and conclude at the 4:00 pm session. Every effort will be made to accommodate every interested participant.

How to register for a Session: In order to assure that the interests of all attendees can be handled, pre-registration is required. In order to keep each workshop manageable, the number of participants for each session is limited. Session times will be closed as they fill up. Registration will be open until March 6. To register, visit the Chevy Chase Lake Sector Plan website at <http://www.montgomeryplanning.org/community/chevychaselake/>. Your registration will be confirmed by March 7.

Workshop Sponsor: Montgomery County Planning Department (M-NCPPC)

Elza Hisel-McCoy, elza.hisel-mccoy@montgomeryplanning.org or 301-495-2115. For more information go to www.montgomeryplanning.org.

Session Contents: During each of the sessions, picture boards will be arrayed around the room. After a brief

introduction from Planning Staff, each participant will be given a card with questions about some of the different elements illustrated in the pictures. Participants will be free to view the pictures, informally discuss the images with other participants, and complete the questionnaire.

What's Next? A follow-up meeting will be scheduled to report on the feedback received from this workshop and what the next steps will be.



FAMILY-FRIENDLY EVENT, "CHEVY CHASE CELEBRATES," IS MAY 1

Martin's Additions residents of all ages, mark your calendars now for an afternoon of old-fashioned fun to be hosted by the Chevy Chase Historical Society in partnership with the Village of Martin's Additions and other historic Chevy Chase neighborhoods. The free event, "Chevy Chase Celebrates," will be held at the Jane E. Lawton Center, 4301 Willow Lane, in the Town of Chevy Chase on Sunday, May 1, from 1-4 p.m..

The Society is observing its 30th anniversary with a focus on celebrations enjoyed by families and neighborhoods through the years. The May 1 celebration will feature dancing to Eubie Blake's 1914 Chevy Chase Fox Trot; a trolley tour of Chevy Chase architecture; performances by the B-CC High School Jazz Band;

children's workshops for decorating house-shaped cookies and creating a community mural; and scrapbooking advice for organizing personal memorabilia. In addition, attendees will be invited to share memories of their own neighborhood celebrations in short video interviews for the Society's Archives.



For details on the May 1 schedule of activities and other Society events throughout the year, visit www.chevychasehistory.org. If you'd like to volunteer to help for a while at "Chevy Chase Celebrates" on May 1, drop a line to chevychasehistory@msn.com.



OUT AND ABOUT THE VILLAGE

COMMUNITY NEWS

We are sorry to report the death of longtime Taylor St. resident **Jim Kranking**, who died of cancer on February 18. Jim, wife Peggy and their three children were well known in Martin's Additions. Jim taught high school physical education and math for 32 years before retiring. His math students remember him as a great teacher who made math fun. One said "He was funny, patient and tolerant, witty and an amazing teacher. He taught me to love geometry." He loved to tell jokes and one student remembers Jim playing imaginary golf (ala Johnny Carson) while they worked on their assignments. Jim was a basketball player in high school and college and went on to coach a variety of high school sports. Jim loved watching sports on TV and for years the family attended all Redskins home games. Jim had a wonderful, dry sense of humor, which was enjoyed by all who knew him.

INTERESTED IN LOCAL LIFE DETAILS?

The American Community Survey (ACS) of the US Census Bureau recently released its estimates from data collected from 2005 - 2009 for Martin's Additions. This is the first-ever ACS survey conducted. Each month the survey samples residents in our municipality. There is much more information at www.census.gov. If you type in your home address you can find all sorts of interesting information. Here are a few fun facts—the data are estimated:

- Median household income in VMA is \$168,750.
- 70% of residents aged 16 and older are employed.
- 52.3 % are female; 47.7% are male. 15.7% of residents are 65 or older.
- 96.3% of homes are owner occupied; 3.7% are renter occupied.
- Percentage of residents who have a college or advanced degree: 86.3%.
- Average household size is 2.85 and average family size is 3.17.
- Mean travel time to work is 26.50 minutes.



NEWS FROM CHEVY CHASE@HOME

BOARD ELECTED

Chevy Chase@Home is starting off its first year of operation with three new members of the Board of Directors, one of them is VMA's own Ernst Liebman of Thornapple St. The others are Peter Gray of Section 5 and Kathleen Topelius of the Town of Chevy Chase. Also from Martin's Additions is Irene Hoskins, who was re-elected to a full 3-year term. Fran Pitlick of the Town was elected Vice-President.

On March 1st, Chevy Chase At Home's *Meet & Mingle* hosted a highly successful program on how to avoid becoming a victim of scammers. Stephen Chaikin of the Montgomery County State's Attorney's Office gave an excellent presentation, filling in at the last minute for John McCarthy, who was called to Annapolis by the Governor. The large audience was not disappointed, and came away with all sorts of tips to protect against various types of fraud. More programs in this on-going series on scams are planned for the future.

MEET AND MINGLE FOR MARCH & APRIL

M & M's annual St. Patrick's Day Party will take place on Tuesday, March 15th, so brush up on your brogue, wear something green and plan to join in. There will be Irish folk tales, refreshments galore, and for sure, a bit o' Blarney! At the Chevy Chase Village Hall from 2 to 4 PM. All are welcome.

In a more serious vein, the April 5th M & M will present a program on "Challenges of Growing Older: Issues of Mental Health." Therapists Sandy Geller and Barbara Scupi will lead the discussion about the changes we encounter as we age, beginning at 2 pm at the Chevy Chase Village Hall. Later in the month, on April 19th, things will lighten up as Martin's Additions artist Millie Shott shows us how to have "Fun With Collage". Same time, same place.

SAVE THE DATE FOR CC&H'S FIRST EVENING PROGRAM!

On May 4th CC@ H will sponsor its first evening program at 7 pm at the Chevy Chase Village Hall, a seminar led by psychiatrist Nathan Billig, MD, titled "Who Does Well in Old Age?"



MANNA IS OFF TO A ROUSING START!!

Our Village’s food donation project is off to an excellent start in 2011! In the first two months, we’ve delivered nearly 1,150 pounds of canned/boxed non-perishables to the Manna Food Center, which serves children and adults at risk of hunger throughout Montgomery County. If we can collect an average 100 pounds of food a week for the rest of the year, we can equal last year’s total of 5,100 pounds.

Lest you think our county – deemed one of the wealthiest in the country – is immune from the problem of hunger, consider this: One in six children under age 18 in our county is considered at risk of hunger and one in four youngsters attending our public schools qualifies for free or reduced-price lunches. Manna helps with the following programs:

Food for Families – Once every 30 days, families certified as being in need of assistance receive a 3-5 day supply of food, including a small box of non-perishables and a box of perishables (milk, bread, fruit, etc.) collected each morning from area markets. They must provide a referral each time they pick up items. This program serves 3,300 households each month.

Smart Sacks – Each week at 40 elementary schools, an estimated 1,400 children receive a backpack full of foods – fruit cups, granola bars, juice boxes—to provide them with nourishment over the weekend.

Agency Food Distribution – Manna also provides direct food aid to soup kitchens, emergency shelters, food pantries and group homes as well as to low-income apartment complexes housing seniors and people with disabilities.

The residents of Martin’s Additions have been so very generous in contributing to our Manna food project – and we know we can count on you for continued support! Drop off an extra item or two each month at the box by the door to the Village Office or put a few things aside each week and when you’ve filled up a bag or box, call the Kirschtens at 301-986-5839 and they’ll be glad to pick it up at your door. Thanks to all for your giving spirit!!



MARCH PROGRAMS AT CHEVY CHASE LIBRARY

The selection for the Non-Fiction Book Group is *The Girl from Foreign: A Search for Shipwrecked Ancestors, Forgotten Histories, and a Sense of Home* by Sadia Shepard. The group will meet on Wednesday, March 9 at 2:30 p.m. There is no need to register. Obtain the book by reserving a library copy – there should be enough copies available within the Montgomery County Library System.

The Great Books Discussion Group will be on Wednesday, March 9 at 7:30 p.m. This month’s selection is *Leviathan* by Thomas Hobbes.

The Jefferson Café will meet on Friday, March 18 at 10:30 a.m. The article to be discussed is “The Rise of the New Global Elite” by Chrystia Freeland. Copies are available at the library reference desk.

The selection for the Fiction, Memoir and Biography Book Group is *A Gate at the Stairs*, by Lorrie Moore. The group meets on Wednesday, March 23 at 2:30 p.m. The “rules” are the same as for the Fiction Book Group.



BROOKVILLE PHARMACY OFFERS SERVICE & DAYS A WEEK!

Brookville Pharmacy offers experienced pharmacists at your service 7 days a week to fill all your prescription needs. And NOW, an adult immunization certified pharmacist is available to administer Zostavax (shingles) injection right in the store. Bring a prescription for Zostavax to the pharmacy and they’ll take care of the rest. An immunization certified pharmacist has also been trained by the American Pharmaceutical Association to administer the following immunizations to individuals 18 years or older: flu vaccination and pneumococcal. For further questions/concerns, contact a pharmacy staff member at 301-652-0600 or visit : www.brookvillepharmacy.com

Village of Martin's Additions
7013 B Brookville Road
Chevy Chase, MD 20815
Phone: 301-656-4112 email:
martinsadditions@verizon.net
FAX 301-656-0030 www.martinsadditions.org

PRELIMINARY AGENDA

March 17, 2011 Council Meeting

Call to Order 7:30 pm

Citizens' Concerns and Comments

Building Administrator's Report

Minutes and Treasurer's Report

Discussion FY 2012 Budget Development

Discussion of Tax Rate for FY 2012

Manager's Report

FAMOUS BCC USED BOOK SALE

SATURDAY, MARCH 26, 10-4 & SUNDAY, MARCH 27, 10-2

Buy Fiction and Nonfiction: Children's, Young Adult, Mystery, Art, Sci-Fi, Travel, Business/Economics, Cooking, Home & Garden, Politics, History, Test Prep, Foreign Language, Science, AND MUCH MORE. Donate Books in Advance of the Sale! Bethesda-Chevy Chase High School, 4301 East-West Hwy., Bethesda, MD. **Drop Off Dates:** Sat. Mar. 12: 2 - 5 p.m.; Sun. Mar. 13: noon - 3 p.m.; Fri. Mar. 18: 2:30 p.m. - 7:30 p.m.; Sat. Mar. 19: 10 a.m. - 4 p.m.; Sun. Mar. 20: 10 a.m. - 4 p.m.; Mon. Mar. 21: 2:30 p.m. - 7:30 p.m.; Tue. Mar. 22: 2:30 p.m. - 7:30 p.m.

VILLAGE COUNCIL AND STAFF

Arthur Alexander 301-718-9787

3517 Raymond Street

arthur.alexander@att.net

Chris Mueller 301-718-9687

3509 Shepherd Street

christophjmueller@yahoo.com

Jill Filipczyk 301-656-5566

301-3510 Taylor Street

jill.filipczyk@gsa.gov

Richard Krajeck 301-654-3663

3500 Bradley Lane

rkrajeck@hotmail.com

Michael Zielinski 301-654-1748 3418

Turner Lane

mzatvma@gmail.com

Staff:

Jean Sperling, Manager

Deb Schmal, Assistant Manager

Phone: 301-656-4112

Fax 301-656-0030

email: martinsadditions@verizon.net

Website: www.martinsadditions.org