
Martin's Edition



A Newsletter for the Village of Martin's Additions to Chevy Chase

NOTES FROM THE CHAIRMAN



Dear Residents of Martin's Additions,

July 1 brings with it a new fiscal year for the Village and the swearing in of a new Council and the selection of officers. I was honored to be selected as Chairman of the Council for FY 2009. As Chairman I see a busy year for the Council as a whole, Village committees and every resident.

Our Land Use Task Force has worked very hard over the last six months, often meeting twice a month, to prepare recommendations for consideration by the community and the Council on ways building regulations might be used to retain the character of the Village. The involvement of every resident is a very important part of the outcome of this work.

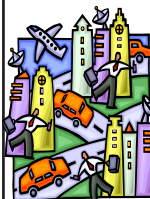
The Council believes that a strong repair and maintenance program for our village infrastructure will save village funds in the long term, so our FY 2009 budget allocates a large share of revenues to repair the cracks and potholes in Village streets to extend their life and delay complete replacement. Substantial appropriations are also made for the care of our trees and general Village operating services. Given both the financial market downturn and lower interest rates, we will be carefully monitoring our income flow for this fiscal year.

Finally, I ask residents to become informed—come to Village meetings, call council members, let us know what you want to talk about, what you want addressed. Get involved—help with Village social events such as the upcoming Halloween Parade and Party, support the food drive, volunteer for a committee. This is how we can foster the wonderful community we have. We rely on the contributions of our residents to keep the Village an active, vibrant place to live.

Richard Krajeck

SEPTEMBER 2008

◆ MEETING TO DISCUSS VMA LAND USE THURSDAY, OCT 23rd, 7 PM



A Public Meeting to discuss the work of the VMA Land use Task Force will be held on Thursday, October 23rd at 7 PM in Chevy Chase Village Hall, 5906 Connecticut Avenue. Everyone is urged to attend to comment on the work to date on the important topic of land use and preserving the character of Martin's Additions. Additional information will be forthcoming. See the article on page 2.



◆ ANNUAL HALLOWEEN PARADE SCHEDULED FOR SUNDAY, OCTOBER 26th at 3 PM

Turner Lane will once again see the annual Village Halloween Parade beginning at 3 PM for big and little monsters, goblins and ghosts in the Village. A scary house will be featured this year. Volunteers are needed for this event to take place. See information below and on page 2.

◆ HALLOWEEN PARADE VOLUNTEERS' MEETING SATURDAY 10/4/08

10AM in Village Office. Please call the Village Office to let us know you're volunteering and how you like your coffee!

◆ FIRST FALL STREET CLEANING OCTOBER 20 & 21

Please park your cars in your driveways. Signs will be posted reminding you of the cleaning. You'll know your street has been cleaned when the street cleaning notices have been removed from your street.



◆ OCTOBER BULK TRASH PICK UP—SATURDAY OCTOBER 11th

Please remember that trash should not be deposited at the curb before the eve of the actual pick-up. Questions on this service should be directed to the Village Office at 301-656-4112.



◆ MONTHLY COUNCIL MEETING

Next Village Council Meeting, Thursday, October 16th at 7:30 PM, 7013 B Brookville Road. Please watch the Village Bulletin Board outside the Brookville Shopping Center for meeting information on work sessions of the Council.

LAND USE TASK FORCE UPDATE

All residents should have recently received a copy of the *Land Use Task Force Handbook: Dealing with the Challenge of Promoting Compatible Residential Construction* in the mail. It is intended to initiate the process of review and discussion about preserving the character of Martin's Additions. This draft document is a "working document"—it will be updated and refined as the work of the Land Use Task Force continues and as resident input is received.

The first opportunity to gather that input will be on ***Thursday, October 23rd in a meeting scheduled for 7 PM in Chevy Chase Village Hall, 5906 Connecticut Avenue.*** An earlier date had been planned but circumstances beyond the control of the Council forced its postponement.

In the meantime, we urge you to read the Handbook—it is a dense document that certainly takes more than one reading to understand—but it is a very important product and reflection of the hard work of the Land Use Task Force and Jakubiak and Associates, the firm who is assisting us in this endeavor.

We also urge you to go to the Task Force website and review the other documents placed there for your instruction. The directions to do this are given to the right. The Village will be sending out additional information for your review in advance of the October 23rd meeting.

HELP NEEDED FOR ANNUAL HALLOWEEN PARADE, OCTOBER 26th



The Scarecrows we made last year at the Halloween Party were so much fun we'd love to do it again but **we need some help to make them.** Think of how much fun it will be to again see the fruits of our scarecrow building labors on front porches and stoops throughout Martin's Additions!

We also need musicians to lead our parade. Does your child play in the school

HOW TO ACCESS THE TASK FORCE WEBSITE

Documents that the Land Use Task Force are working on with Jakubiak and Associates are accessible to every resident for their review and consideration.

1. Go to www.jakubiak.net
2. Click on the link that says "Village of Martin's Additions"
3. At the log-in page, enter the case sensitive log-in (VMA) and password (village)
4. Click on "Documents" on the right.

If you register your email address, you will receive an email when a new document is uploaded to the site. You may register your email address by emailing a request to bn@jakubiak.net

band? Could he or she put together a group to at least get out a few bars of "When the Saints Go Marching In" while our goblins and ghosts and scary things parade up and down Turner Lane?

We'll need help to do this! Can you volunteer? Could you pack some candy bags? Do you know how to make scarecrows? How about help painting pumpkins? Please email the Village Office at martinsadditions@verizon.net to offer your help. ***A planning meeting is scheduled for Saturday, October 4, in the Village Office at 10 AM.***

SAFETY FOR SENIORS BRIEFING



Presented by Montgomery County Police – 2nd District, Officer Dana Matthis – Community Services Officer 301-657-0119.

When: Monday, October 6, 2008

Where: Davis Library Community Room– 6400 Democracy Blvd., Bethesda Time: 3:00pm – 6:00pm

Topics to include: Residential security: Locks, Windows, Doors, Alarms, Landscaping, Reporting suspicious activity, When to call the Police. Table displays by Oasis, Windows Plus, Bethesda Chevy Chase Chamber of Commerce and much more!!

BULK TRASH PICK UP DATES FOR THE VILLAGE OF MARTINS ADDITIONS

(The second Saturday of each month)

October 11, 2008

November 8, 2008

December 13, 2008

January 10, 2009

February 14, 2009



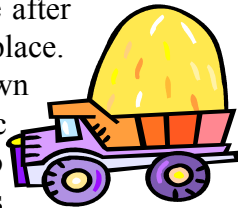
BROOKVILLE ROAD SIDEWALK UPDATE

Chevy Chase Village reports that they continue working on introducing a dedicated pedestrian walkway into the Brookville Road corridor where none exists now between East Irving Street and Bradley Lane. Similar but less organized efforts had been attempted in both the mid-'80's and '90's.

Design iterations are being considered to accommodate concerns of residents living along the roadway and to satisfy both the Historic Preservation Commission and Maryland State Highway Administration, both of which have jurisdictions over the roadway. Current Village-preferred designs use a porous material for the walkway installed at the same level as the roadway with a divider between the walkway and vehicle travel lanes. A best scenario envisions this work being completed by the spring of 2010.

SPEAKING OF BROOKVILLE ROAD NO MORE THROUGH-TRUCKS

The Maryland State Highway Administration will soon be posting signs that say No Through Trucks on Brookville Road, in response to numerous complaints about through-truck traffic. Since it is a state highway however, only trucks larger than 5 tons will be prohibited from using Brookville Road as a through-road. The state has told us that the 5 ton, or Class E trucks, are single unit trucks and essentially pick-up trucks. The State will conduct a special enforcement period some time after the restriction signs are put in place. It is hoped that we will see a down turn in truck traffic. Truck traffic however, will not drop to zero because of construction projects within the immediate neighborhoods.



NUMEROUS CAR BREAK-INS PLAGUE AREA

Many residents have recently reported vehicle break-ins throughout Martin's Additions. At the September Village Council meeting the Chevy Chase Village Police reported that there were as many as 22 reports of vehicle break-ins and property stolen on just one night early in the month. Of course the police recommend that you lock your cars, remove all valuables, and leave nothing in sight. If you experience a break-in call the County Police non-emergency number 301-279-8000. The county has stepped up their patrols throughout the Village and the surrounding areas.



CHEVY CHASE FIRE DEPARTMENT OPEN HOUSE

SATURDAY OCT. 11th

Save Saturday October 11th from 10 AM to 3 PM for an exciting and informative day at the Chevy Chase Fire Station at 8001 Connecticut Avenue.

Features of the day include supervised fire engine rides for children and adults, demonstrations by members of specialized teams such as high rise rescue and hazardous materials, a clown, fire truck slide, safety house, balloons and hot dogs and cokes for everyone. The Fire Department asks that we remind everyone to check your smoke alarm batteries!



“RESCUE DAY” SLATED FOR SATURDAY OCTOBER 4th 11 AM to 4 PM.

Kids and adults alike will thrill to the sights of the rescue equipment, personnel and demonstrations at the “Rescue Day” Open House at the BCC Rescue Squad Headquarters, 5020 Battery Lane in Bethesda. This year's Rescue Day is being held in conjunction with the “Taste of Bethesda.” So head on over there and watch the well trained personnel use the jaws-of-life, scale walls, put out vehicle fires and enjoy a special visit by a helicopter!



OUT AND ABOUT THE VILLAGE

◆ Welcome to the Rev. *Alex Large*, his wife *Emily*, a teacher, and their toddler daughter, Eloise, the new residents at **3411 Bradley Lane**. Alex has come from a church in Vail, Colorado, to be the new assistant rector at All Saints Church on Chevy Chase Circle. He will be in charge of church programs for young families, and will also participate in all aspects of ministry, including pastoral care.



◆ Welcome to *Senta and Anas Alabbadi* to **3518 Raymond Street**. They recently moved from Jordan for Senta's job in the political affairs office at the German Embassy.

◆ Welcome to *Cynthia Bolton* and her two children 10 and 13 and two dogs to **3519 Turner Lane**. They moved here from NW Washington.

◆ Welcome to *Marcella and Steve Trowern* at **3529 Raymond Street**. They moved into Martin's Additions from North Potomac with their three children, Grace and Ursula (5), and Thomas (3).

◆ Welcome to *Ulrike Meyer-Joergens and Christian Joergens* at **7313 Delfield Street** who have moved here from Bonn, Germany. Christian is with the Germany Embassy. Their daughter Mara (12) is with them here in the United States and son Phillip remains in Germany studying ship building in college.

◆ Welcome to *Patricia Amsellem and Luez Pereira da Silva* who moved into **3408 Turner Lane**. Luez is with the World Bank. They just moved here from Brazil with their dog, a Labrador, Café. They have lived in the DC area in the past.

◆ Welcome to *Grace and Ed Novak* who recently completed building their home at **7220 Chestnut Street**. Daughters Julia is in 5th grade at Blessed Sacrament and Nikki is in 8th Grade. They have moved from the District.

◆ Welcome to *Ulrike and Simon Wilson* at **6811 Brookville Road** who recently moved here from Cambridge, Mass. with their three daughters, Miriam (6 ½) Ellie (5) and Mina (3).

◆ Welcome to *Anna Spruill* at **3417 Turner Lane**. She's from nearby Town of Chevy Chase.



VILLAGE ENVIRONMENTAL COMMITTEE FORMING

Are you interested in helping to create an Environmental Committee to explore ways to reduce our environmental impacts? Residents interested in helping to organize such a committee for the Village of Martin's Additions (establish its goals, scope, and direction), serve on the Committee, or assist in any of the Committee's efforts should contact resident Jon Goldstein (Quincy Street, 301-656-4676, jongoldstein@verizon.net) or call the Village Office at 301-656-4112.

CAN YOU HELP RE-CYCLE ITEMS IN OUR BULK TRASH PICK UP?

Recently a resident remarked at the number of large children's toys and bicycles that were placed out for the monthly bulk trash pick up and suggested that the Village try to make arrangements to keep these many usable items in the mainstream. Do we see a volunteer in the audience? If you want to raise you hand, please call the office at 301-656-4112 to discuss setting up a plan!

RECYCLE OLD CELL PHONES TO BENEFIT ABUSE VICTIMS

Chevy Chase Village has been kind enough to welcome residents of Martin's Additions into their "Recycle Old Cell Phones Program". Old cell phones and chargers may be dropped off at the Communications Center in Chevy Chase Village Hall at 5906 Connecticut Avenue (enter from Laurel Parkway side). The Communications Center is just inside the front door to the left. Police Chief Gordon will deliver them to the Sherriff's office for recycling. The phones will be programmed for victims of domestic violence or senior citizens so they may call 9-1-1 to report an emergency situation. They cannot be used for any other function.

SHARE WHAT YOU NO LONGER NEED

Don't throw it away! A resident reported that that she recently donated sheets, blankets, china,

glassware, stainless utensils and furniture (including beds, bureaus and upholstered sofas) to *A Wider Circle* charity, which is located in Bethesda, and they were delighted to have the goods. This wonderful nonprofit charity, which comes to pick up items, serves needy people who have very little. It was started by Mark Bergel, who — while delivering food to impoverished families — noticed that many families were sleeping on the floor, had no furniture and were keeping their few pieces of clothing in plastic garbage bags. **Call 301-657-1010** to donate; visit www.awidercircle.org to learn more.

HELP US GET THE VMA LIST SERV MEMBERSHIP TO 200!



All residents are encouraged to join the VMA List Serv! Just go to <http://groups.google.com/group/martins-additions-chevy-chase> and click on “Sign In and Apply for Membership” and everything will fall into place from there. As a member of this “List of Neighbors in Martin’s Additions,” you will hear from other Village residents by receiving their postings and requests as a normal part of your daily e-mail traffic. You will be able to respond to those emails either individually or to the group.

To send an email to the list of residents just add a contact name to your address book named “List Serv”, much like you’d enter the name of a friend or business contact. Next, add the email address martins-additions-chevy-chase@googlegroups.com into the email address book, again like you’d add your friend’s email address. You are now ready to email the VMA List Serv with a question, or comment, by calling up your old friend “List Serv”.

THIRD ANNUAL ELLEN’S RUN

Get out your walking and running shoes! The third annual Ellen’s Run is being held to remember Ellen Vala Schneider whose involvement in our community touched and inspired so many. Ellen’s Run will benefit two charities in which Ellen was very active: Mental Health Association of Montgomery County, on whose Board of Directors she served, and the Bethesda-Chevy Chase High School Community Scholarship Fund, of which she was Chair. More than 700 individuals participated in Ellen’s Run last fall.

What: Ellen’s Run is a 5K race/3K Walk

Where: Candy Cane City Pavilion (7901 Meadowbrook Lane, Chevy Chase). Prizes for the top runners and the top team.

When: Sunday, October 19, 2008, at 9 am.

Sign-up by October 11: \$25 (adults — includes a t-shirt), \$10 (3-12 years old— includes tshirt).

After October 11: \$35 (adults), \$10 (3-12 years old).

Online registration closes at noon, October 10th.

To donate or register, go to <http://www.ellensrunonline.org/>

New This Year: Contribute \$100 or more you’ll be recognized as a member of *Ellen’s Legacy Circle* Get a group together and register as a part of a **TEAM** by October 10th. Details on the website.



VMA FOOD DRIVE PICKING UP SPEED!

Since the VMA food drive kick-off in the last newsletter, almost 200 lbs of food has been recorded in the name of the Village of Martin’s Additions at the Manna Food Collection Headquarters in Silver Spring. Linda and Dick Kirschten (Turner Lane) who initiated this project, have been kind enough to deliver the collections from the boxes in their home, neighboring homes and the Village Office. The Village was recognized in the most recent Manna Food Center newsletter!



A Food Collection Box is available for your contributions just inside the office door at 7013 B Brookville Road. You may also start your own box at home and just call Linda and Dick at (301) 986-5839 and they will come and pick up your collection with just a phone call. The Village will also be offering opportunities for donations to be made at Village events, such as the upcoming Halloween Party and Parade on Sunday October 26th. Manna Food Center distributes food to more than 2,300 families each month at thirteen food distribution centers located throughout the county. They also distribute food to emergency shelters, group homes, food pantries and soup kitchens at no charge.

EXCERPTS FROM THE PAST HELP US LOOK TO THE FUTURE.

More than 15 years ago, in the spring of 1993, an Urban Land Use Study was conducted on most of Martin's Additions by an architecture class at the University of Maryland's School of Architecture. This study was undertaken in partial fulfillment of the requirements of a course entitled "ARCH 480, Problems and Methods of Architectural Preservation" taught by Dr. David Fogle. The Village Office recently came across copies of that study and felt that today's residents might be interested.

Many of the findings about the character of Martin's Additions uncovered by that study are consistent with the findings of our community character today, as described by the urban planning firm of Jakubiak and Associates, hired to assist our Land Use Task Force in developing regulations that might help preserve that character. That is good news; our unique character is still identifiable by the simple fact that many of the observations about Martin's Additions remain, even though we have changed.

We thought that repeating some of the earlier observations of our community by trained urban planners' eyes would lend support to today's observations, as well as be of general interest to newer residents. This information is divided into four major parts. We will begin by with excerpts from the first part: *Thornapple Street and the Northern part of Delfield Street*. The series will be continued over the next several months. Complete copies of the studies are available in the Village Office.

History of Martin's Additions

The land on which Martin's Additions was built was originally farmland. In the 18th century the property belonged to the McCubbin family, who built the large manor house call 'No Gain,' in 1789. [No Gain still stands at the corner of Brookville Road and Thornapple Street, in Section 5 of the Village of Chevy Chase]. By the turn of the 20th century, six families farmed the land which would become Martin's Additions. The six families were Dunlop, Ghormley, Wise, Callahan, Cummings and Brook. These families raised corn, wheat and dairy cows and sold milk to the residents of the newly-built

houses. In the 1930's, the dairy herds were taken over by the Lucerne cooperative, which sold milk to the Safeway chain of grocery stores. However, as development spread northward, the dairy herd diminished. By the 1940's, cultivation had ceased at No Gain, the last working farm.

The residents of the Village organized themselves into the Citizens' Committee in 1906. One of the first things the association undertook was to lay a boardwalk over the muddy path to the railroad station on Connecticut Avenue for the convenience of the commuters. Gradually the streets were named, sewer and lights installed and sidewalks built. Because residents had to pay for all these improvements themselves, they sought a way to equitably distribute the burden. In 1916, the association was designated a "special taxing body with jurisdiction over local improvements and services" by Act of the Maryland Legislature.

The Village of Martin's Additions was incorporated as a municipality in the state of Maryland in 1985. Today, the Village government still reflects the local control favored by the first residents. The affairs of Martin's Additions are manager by the Council, made up of volunteer residents. The Village is administered by a Manager and expenses are paid by a property tax on residents as well as shared state highway revenue, a portion of the State income tax, county revenue reimbursements for duplicative services and certain permits and fees.

Characteristics of Thornapple Street and the Northern Part of Delfield Street.

Thornapple Street and the northern leg of Delfield Street make up the northern-most area of Martin's Additions. Thornapple Street runs east-west from Brookville Road to Summit Avenue and is a moderately busy road. Delfield Street runs north-south to intersect the mid-point of Thornapple Street. Because it is a dead end road, there is very little traffic."

These two streets are characterized by variety in harmony. The various architectural styles, the differing sizes of houses and lots and the individualist landscaping might be expected to fragment the feeling of community. However, these features are unified by the common setback lines and height restrictions

of the houses and by the unifying impression of large trees and landscape plants.

Some of the houses in this part of Martin's Additions have had alterations or additions which change the character of the neighborhood. Alterations and additions which are out of keeping with the original nature of the house can affect the community by altering the streetscape and the neighboring back yards.

Many of the houses on these streets have been altered over the years. Some of the alterations are in keeping with the scale and style of the original structure and complement their neighbors. However, some of them are so large or out of keeping with the house's original character that they alter the fabric of the community. Porches that have been enclosed can significantly modify the nature of the house and affect the streetscape. Additions made to the backs of houses can transform the neighboring backyards.

Architectural Styles and Typical Houses.

Three architectural styles predominate on these two streets. Wooden bungalows of one, one and one-half or two stories were built in the 1920's and 1930's. Two-story brick colonial revival homes were constructed between 1935 and 1940. Five of these colonial houses were built at the corner of Delfield and Thornapple by the same developer. One-story brick ramblers or ranch houses were erected between 1945 and 1949. Interspersed with these prevalent styles are a few unusual houses, including a Dutch colonial revival style and a stucco four-square.

Landscape features.

The most distinctive landscape features of this section of Martin's Additions are the forested area behind the houses on the east side of Delfield and the north side of Thornapple. These long and narrow lots slope down toward a stormwater gully. All of the land is privately owned. The back ends of some of these lots have been cleared, but most have been left to grow wild in thickets and trees.

The presence of this forest can hardly be detected from the street. Nevertheless, the residents of Martin's Additions are committed to protecting it from development. They recently acted to prevent the subdivision of one of these lots, which would have resulted in the construction of a house in the middle of the forest.

General recommendations for Preserving this Section of Martin's Additions.

Residents would seem to favor "no change" in the character of Martin's Addition. Nonetheless, many of those same people will certainly want to alter their own houses at some point. Several steps could be taken to preserve the harmonious individualism which characterizes Martin's Additions. Because the Village is subject to the zoning restrictions of Montgomery County, residents could consider an overlay plan such as the Garrett Park scheme. Many residents object to house additions that are too large or that detract from the common areas in the back of the lots. The Village Council could institute recommendation whereby those considering additions could consult with their neighbors before, rather than after, plans have been drawn up.

Many residents express affection for the large trees in the neighborhood, yet many of these trees are in poor health. A tree ordinance could be enacted to encourage homeowners in caring for the trees on their property. Some residents indicated an interest in improving the small, green-and-white street signs which mark the boundaries of the Village. Instead of bigger signs, residents could use "signature" plantings to set the village off from nearby communities. By choosing a flowering plant and encouraging its cultivation, Martin's Additions would be following the example of Takoma Park, Maryland which had made a feature of its azaleas, for example. Residents should also consider prohibitions against tall fences that block views and against circular driveways that, in effect, create paved front lawns.

The character of Martin's Additions is one of individual variety within a setting of unified community. This can perhaps be best preserved by preventing out-of-character additions to houses and by sustaining the large landscape features. By retaining the scale and style of the existing architecture and the charm of the distinctive yards, residents would be able to preserve and promote the varied harmony which sets Martin's Additions apart from its neighbors.



Village of Martin's Additions
7013 B Brookville Road
Chevy Chase, MD 20815

**VILLAGE COUNCIL AND STAFF
 2008**

Council Chairman

Richard Krajeck 301-654-3663
 3500 Bradley Lane rkrajeck@hotmail.com

Council Vice-Chair

Noell Sottile 301-654-7898
 3508 Cummings La. noniesings@hotmail.com

Council Secretary

Diane Everts 301-654-7777
 3522 Raymond St. dianeade1@aol.com

Council Treasurer

Catherine Gwin 301-652-7425
 7314 Delfield St. catherinegwin@gmail.com

Deputy Vice-Chair

Larry Wasson 301-652-5122
 7223 Delfield St.

lwasson@affiliatedinspectors.com

Village Office

301-656-4112
 Jean Sperling, Manager FAX 301-656-0030
martinsadditions@verizon.net

BUILDING PERMITS ISSUED/REQUESTED

The following Permits have been recently requested or issued:

- ◆ Demolition and Build, 3513 Bradley Lane
- ◆ Build, 107 Quincy Street
- ◆ Demolition and Build, 3516 Turner Lane
- ◆ Dumpster, 7223 Chestnut Street
- ◆ Fence, 3529 Raymond Street



VILLAGE MEETINGS

The next Village Council Meeting will be held on October 16th. Council meetings are held every **third Thursday of the month at 7:30 pm**, in the Village Office located at 7013 B Brookville Road. The Land Use Task Force generally meets on the fourth Thursday of the month in the Village Office.

Martin's Additions List Serv Home Page:
<http://groups.google.com/group/martins-additions-chevy-chase>.